

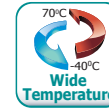


# IE500-MNB1300

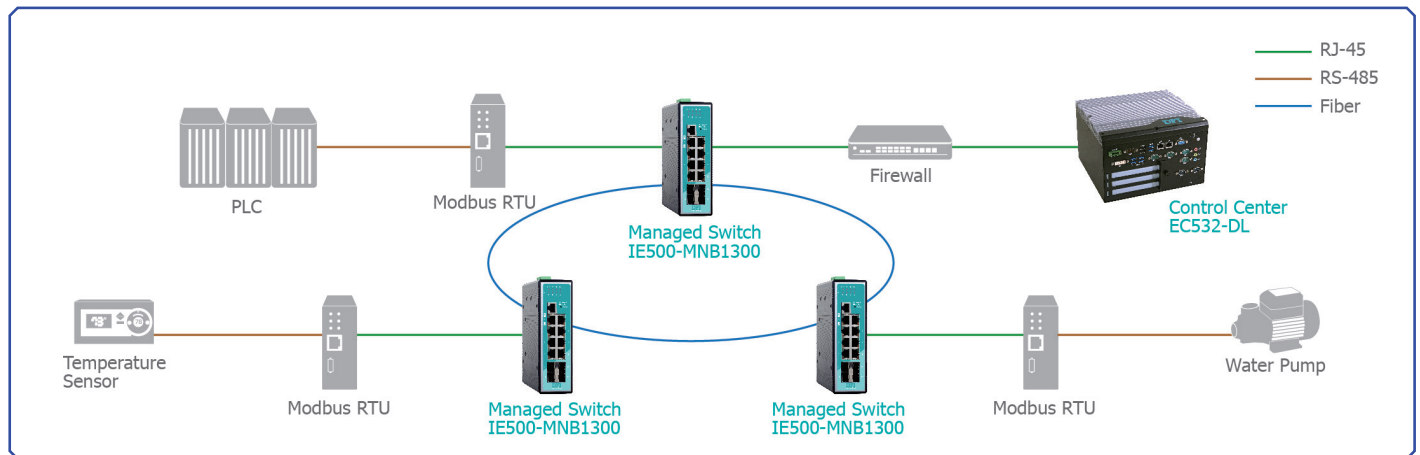


## Features

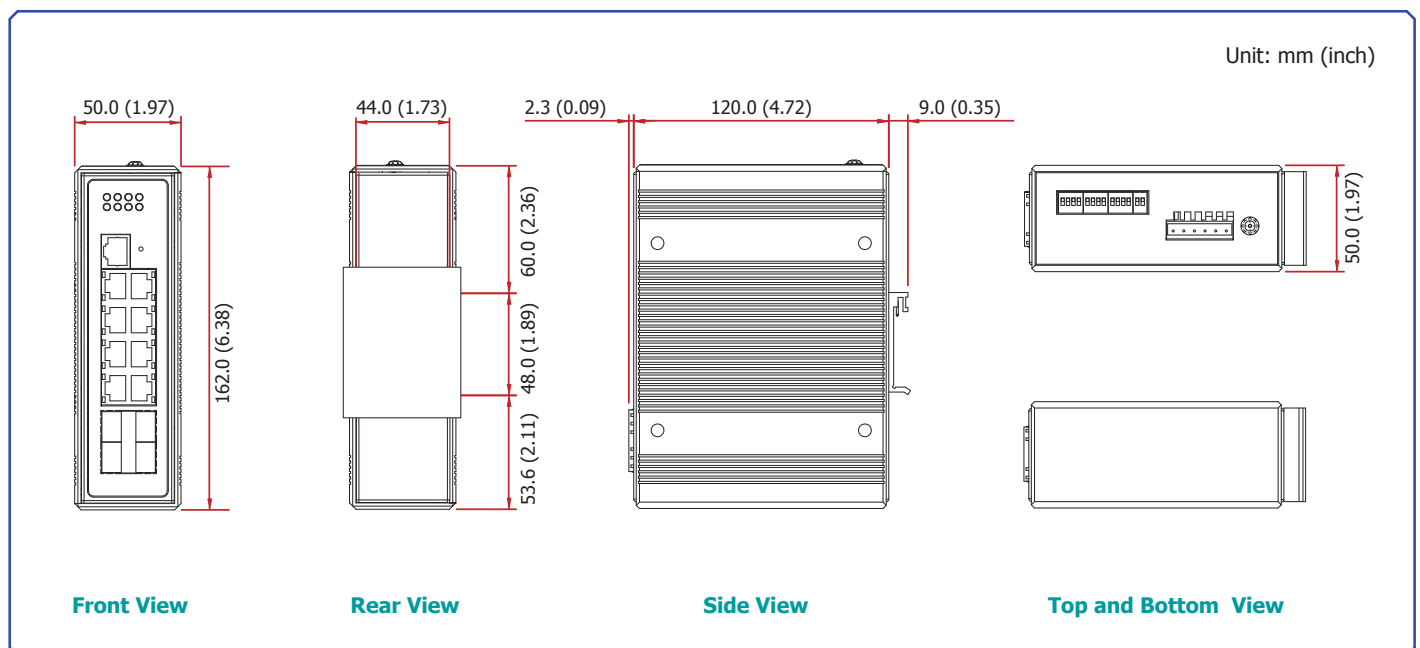
- 8-port 10/100/1000BASE-T(X) + 4-port Gigabit SFP + 1-port Console
- Port-based VLAN, IEEE 802.1Q VLAN, GARP and GVRP
- Offers a very fast recovery time of less than 50ms
- Efficient network monitoring and proactive capability
- Comprehensive QoS mechanisms to assign priority



## Scenario



## Mechanical Drawing



## Specifications

<b>COMMUNICATIONS</b>	<b>Standards</b>	IEEE 802.3 (10BASE-T) IEEE 802.3u (100BASE-TX) IEEE 802.3ab (1000BASE-T) IEEE 802.3z (1000BASE-SX/LX) IEEE 802.3x (Flow Control) IEEE 802.3ad (Link Aggregation)	IEEE 802.1D (STP) IEEE 802.1w (RSTP) IEEE 802.1p (CoS Prioritization) IEEE 802.1Q (VLAN Tagging) IEEE 802.1X (Port Authentication) IEEE 802.1ab (LLDP)
<b>PERFORMANCE</b>	<b>Jumbo Frame</b>	10K	
	<b>MAC Entries</b>	16K	
<b>NETWORKING FEATURES</b>	<b>Configuration</b>	Configuration Upload/Download Command Line Interface Firmware Upgradable Management VLAN	SNMP v1/v2c WebGUI Telnet
	<b>VLAN</b>	4K Active VLAN GARP/GVRP	Port-based VLAN IEEE 802.1Q
	<b>Redundancy</b>	Dual Homing Proprietary Ring	STP/RSTP
	<b>Security</b>	Access Control List DHCP Snooping Port Security	802.1X Port Authentication MAC Limitation SSH
	<b>Traffic Control</b>	IGMP Snooping/Querier Abnormal Traffic Detection Rate Limitation Port Isolation Loop Detection	Link Aggregation Storm Control Flow Control MVR QoS
	<b>Diagnostics</b>	Real-time Statistic Traffic Port Mirroring E-mail Alarm LED Status SNMP Trap	SFP DDMI SNTP RMON Syslog
<b>INTERFACES</b>	<b>Connectors</b>	8 x 10/100/1000BASE-T(X) (RJ-45) 4 x Gigabit SFP 1 x Console Port (RS-232)	
<b>POWER REQUIREMENTS</b>	<b>Power Input</b>	Primary: 12~60V DC	Redundant: 12~60V DC
	<b>Power Consumption</b>	18W	
<b>MECHANISM</b>	<b>Enclosure</b>	IP30 Protection	
	<b>Dimensions ( W x H x D )</b>	50mm x 162mm x 120mm (1.97" x 6.38" x 4.72")	
	<b>Weight</b>	860 g (1.90 pound)	
<b>ENVIRONMENT</b>	<b>Operating Temperature</b>	0 to 60°C (32 to 140°F)	-40 to 70°C (-40 to 158°F) (Optional)
	<b>Storage Temperature</b>	-40 to 80°C (-40 to 176°F)	
	<b>Operating Humidity</b>	10 to 95% RH (Non-condensing)	
	<b>Storage Humidity</b>	5 to 95% RH (Non-condensing)	
	<b>MTBF</b>	99,992 hrs @ 70°C	
<b>STANDARDS AND CERTIFICATIONS</b>	<b>EMI</b>	FCC Part 15 Subpart B Class A EN 55022 Class A	EN 55011 2009 Class A EN 61000-6-4
	<b>EMS</b>	EN 55024 EN 61000-6-2 IEC 61000-4-2 (ESD) Level 3 IEC 61000-4-3 (RS) Level 3	IEC 61000-4-4 (EFT) Level 3 IEC 61000-4-5 (Surge) Level 3 (L to PE 3KV) IEC 61000-4-6 (CS) Level 3
	<b>Marine</b>	DNV 2.4 IACS E10	IEC 60945
	<b>Shock</b>	IEC 60068-2-27 (Processing)	
	<b>Freefall</b>	IEC 60068-2-32 (Processing)	
	<b>Vibration</b>	IEC 60068-2-6 (Processing)	

## Ordering Information

Model Name	Configuration
<b>IE500-MNB1300</b>	13-port Managed Switch, 8-port 10/100/1000BASE-T(X) + 4-port Gigabit SFP + 1-port Console, 0 to 60°C
<b>IE500-MNW1300</b>	13-port Managed Switch, 8-port 10/100/1000BASE-T(X) + 4-port Gigabit SFP + 1-port Console, -40 to 70°C

## Packing List

• 1 IE500-MNB1300/IE500-MNW1300 Switch
• 1 Console Cable
• 1 Installation Guide

## Optional Items

• Power Adapter (20W, 24V, w/o Power Cord, 1.5m)	671-102001-000G
• Power Cord (Standard: USA, 1.8m)	332-700010-201G
• Power Cord (Standard: EUR, 1.8m)	A81-004003-000G
• Power Cord (Standard: CH, 1.8m)	A81-000001-000G
• Power Cord (Standard: JP, 1.8m)	332-054034-005G