



iMage-E

Single-Person Fever Detection
User Manual for TK-008

Version information :

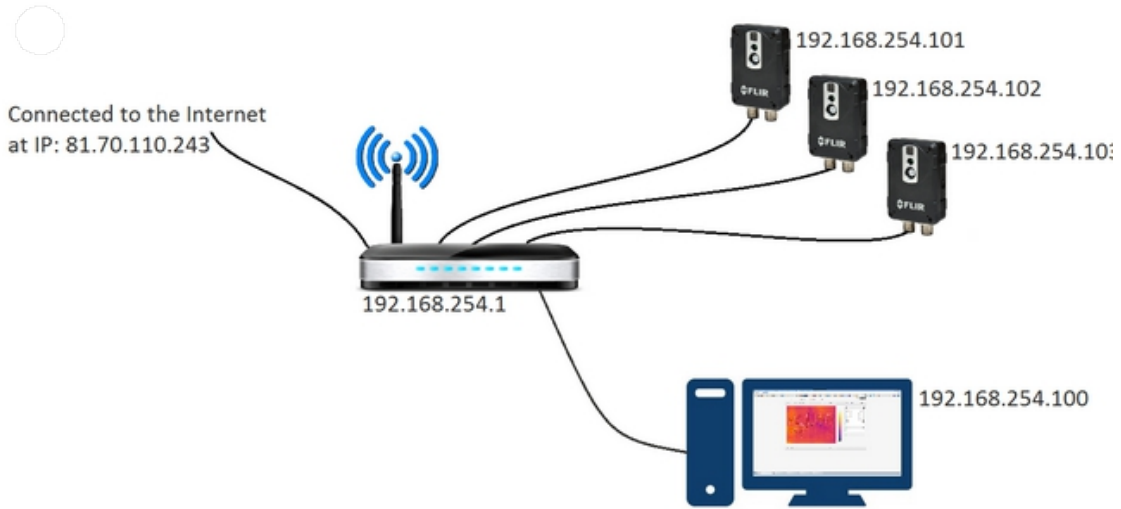
Version	Content	Date
Ver. 1.0	Version 1	2020/3

Table of Contents

1. System Architecture	4
2. Installation Requirements	4
3. Camera Settings	
3.1 Connecting the FLIR AX8.....	5
3.2 IP Address settings	6
3.3 Global Parameters settings	8
3.4 Box measurement setup.....	8
3.5 Isotherm colorizing setup	9
3.6 Temperature alarm setup (Sync with EZ Pro).....	10

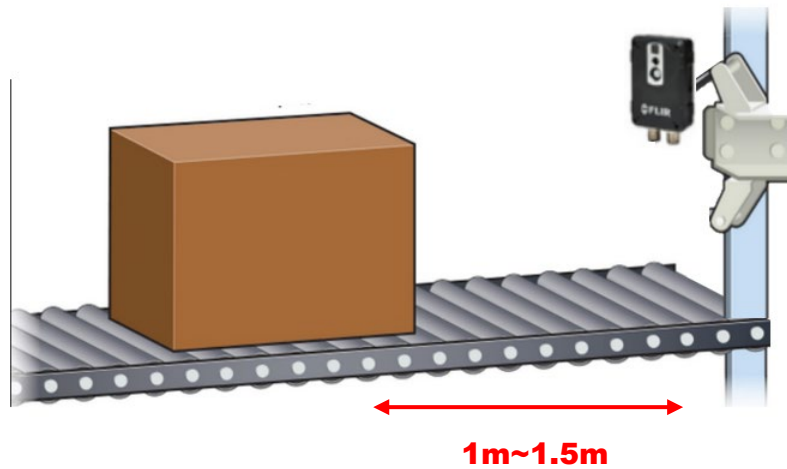
1. System Architecture

Mount the FLIR AX8 and connect the camera using a PoE. If the operating system is equipped with DHCP, then an IP address will automatically be assigned to AX8. (The factory default IP address is: 192.168.1.155)



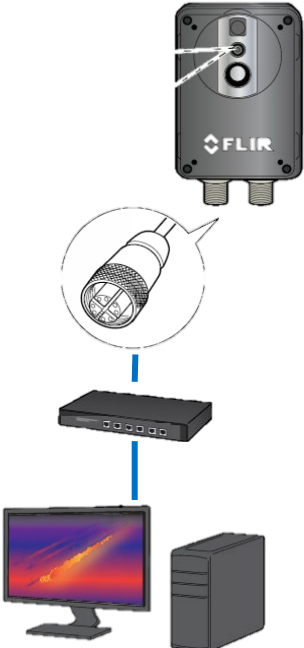
2. Installation Requirements

Mount the FLIR AX8 to the same height as the test object, approx. 1 - 1.5 meters in the distance.

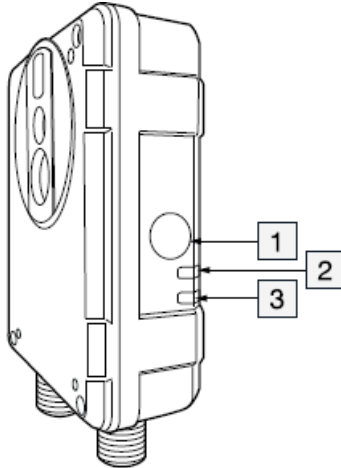


3. Camera Setup

3-1. Connecting the FLIR AX8

	<ol style="list-style-type: none">1. Connect the Ethernet Connector (M12,X-coded) to the left side port.2. Connect the camera to the PoE Switch,.3. Connect the PoE Switch to the system via Ethernet cable.
---	--

Reset button and Indicator LEDs

	<ol style="list-style-type: none">1. Reset button: Do not hold down the reset button when connecting power to the camera!2. Ethernet signal indicator: Permanent Green Light: The camera is connected to the network, but no data is being transmitted. Flashing Green Light: The camera is connected to the network and data is being transmitted.3. Power/Error LED: When the camera is operating normally, the LED indicator will display BLUE light. If the camera enters "Recovery mode", the LED indicator will display RED light.
---	--

3-2. IP Address settings

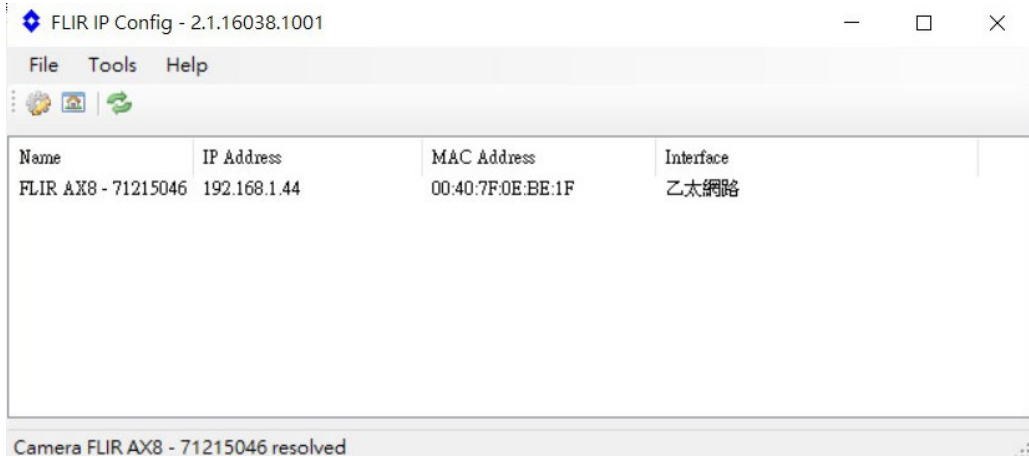
When FLIR AX8 has been successfully connected, an IP address will automatically be provided through DHCP.

(The factory default IP Address is: 192.168.1.155)

IP Address is displayed in the FLIR IP Config Tool window.

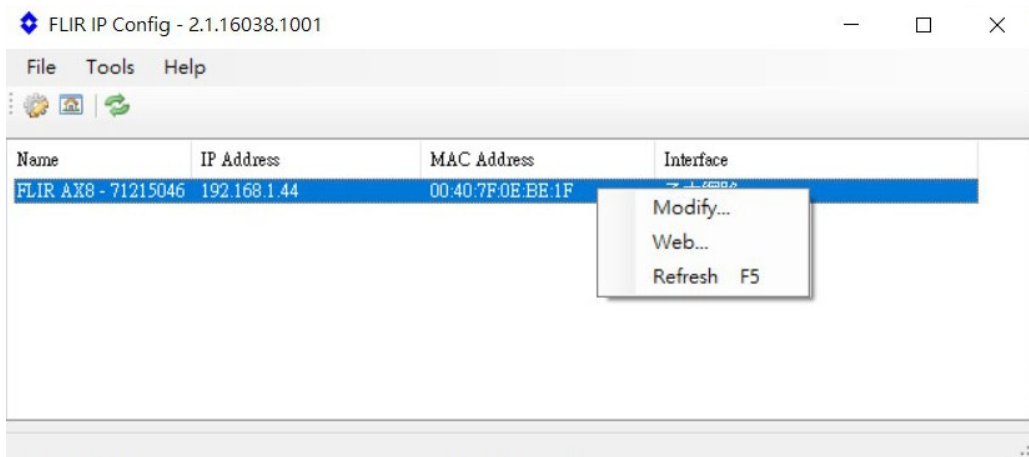
(FLIR IP Config Tool can be downloaded from the following link:

https://flir.custhelp.com/app/answers/detail/a_id/1137)

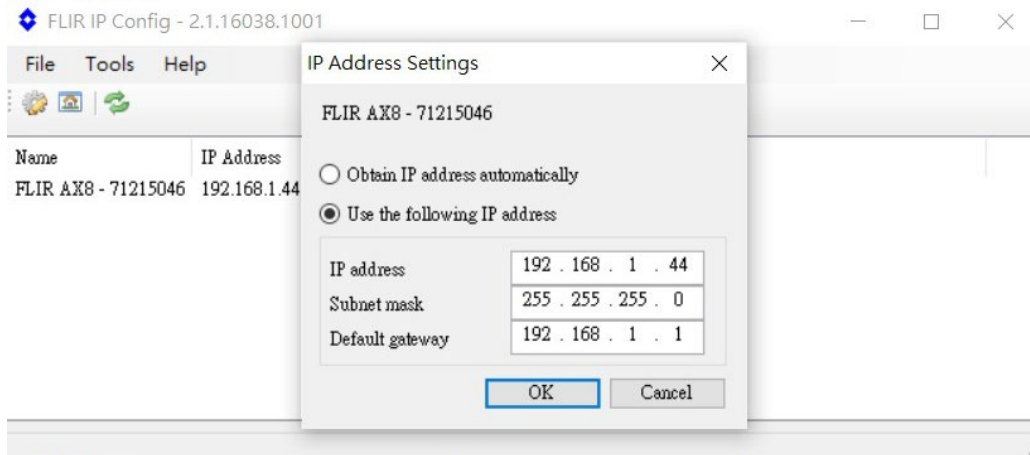


Modifying IP setup:

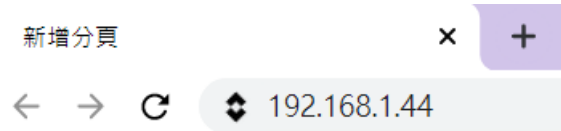
- Modifying IP using Config Tool
 - (1) Right-click on the camera in the list of detected devices, and select **Modify**



- (2) Select "Use the following IP address", and then enter new values for the IP address, Subnet mask and gateway.



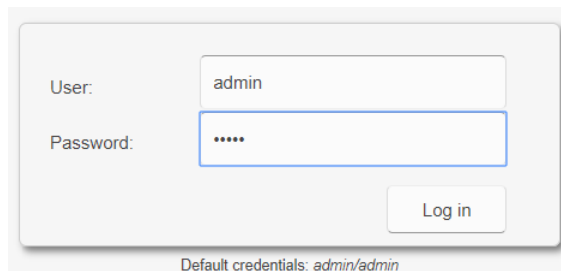
- Modifying IP using camera web interface
 - (1) To connect to the web interface, enter the IP Address of the FLIR AX8 camera into the address bar of a web browser.



The default user credentials are:

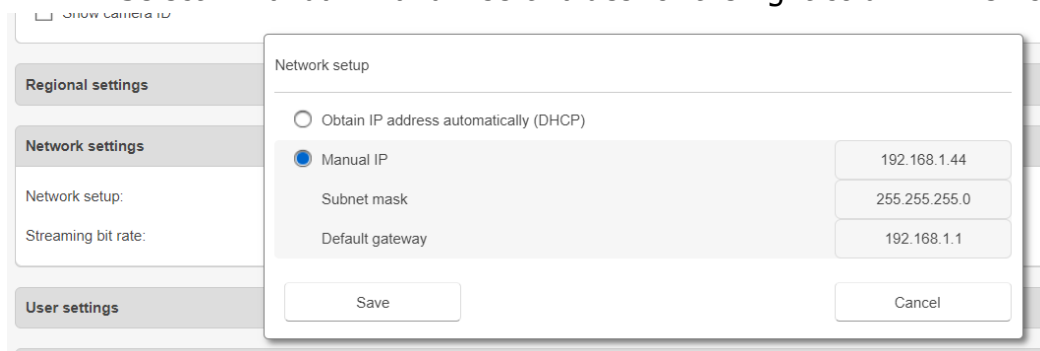
User: admin

Password: admin



- (2) Go to **【Settings】 > 【Network settings】 > 【setup】**

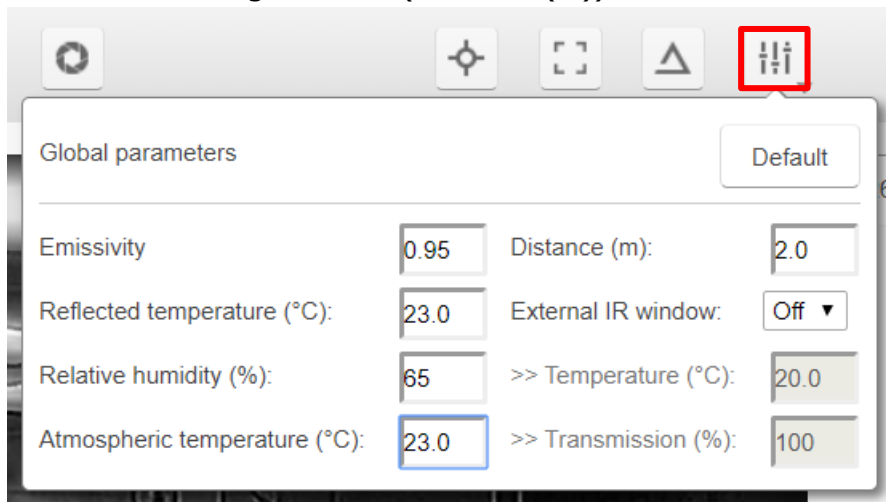
Select **• Manual IP** and insert values for the right column. Then click *Save*.



3-3. Global Parameters settings

1. Global parameters should be properly set up before using the AX8 to take temperature measurements.

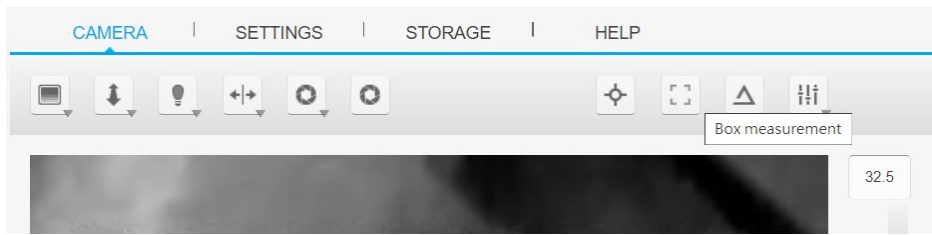
Set the measuring distance.(Distance (m))



2. Select a wall with a low refractive index and measure its temperature as an indicator of the ambient temperature.
3. According to the ambient temperature, the *Reflected temperature* and the *Atmospheric temperature* should both be set to the same value.
4. *Emissivity* coefficient is a factor that can slightly compensate measurement results. If the measured temperatures are relatively high, the user can tune the *Emissivity* by a small amount as a correction to obtain accurate temperature measurements.

3-4. Box measurement setup

1. Click the *Box measurement* on Web interface to add new measurement areas.

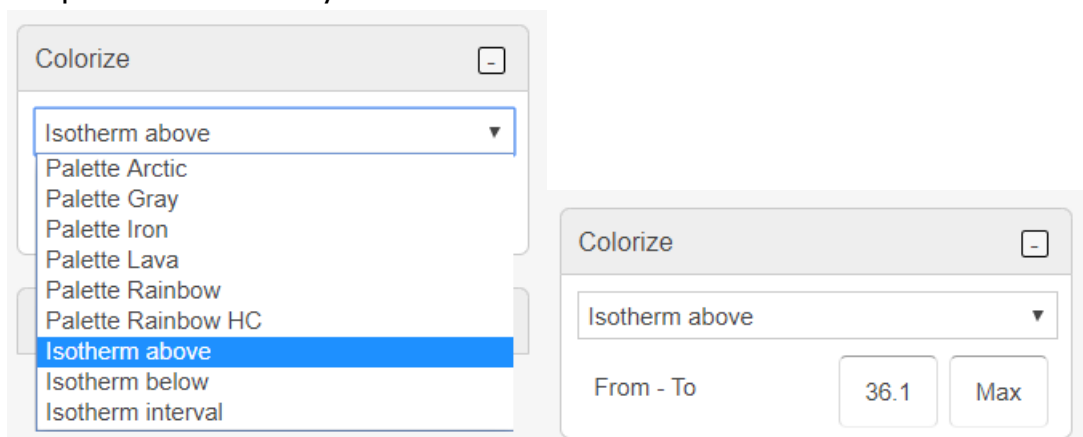


2. The mouse can be used to drag or adjust the measurement area.



3-5. Isotherm colorizing setup

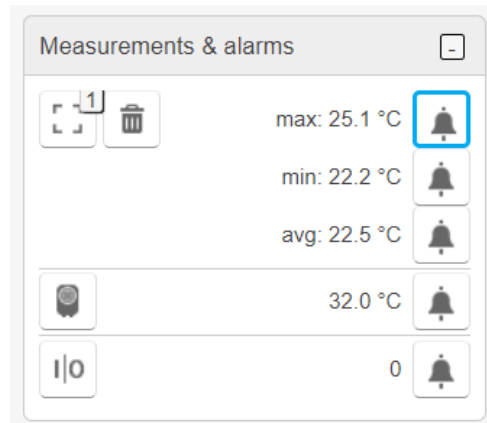
The *Colorize* list is in the upper right corner of the Web interface. You can change the palette to display different temperature within an image or increase the temperature readability.



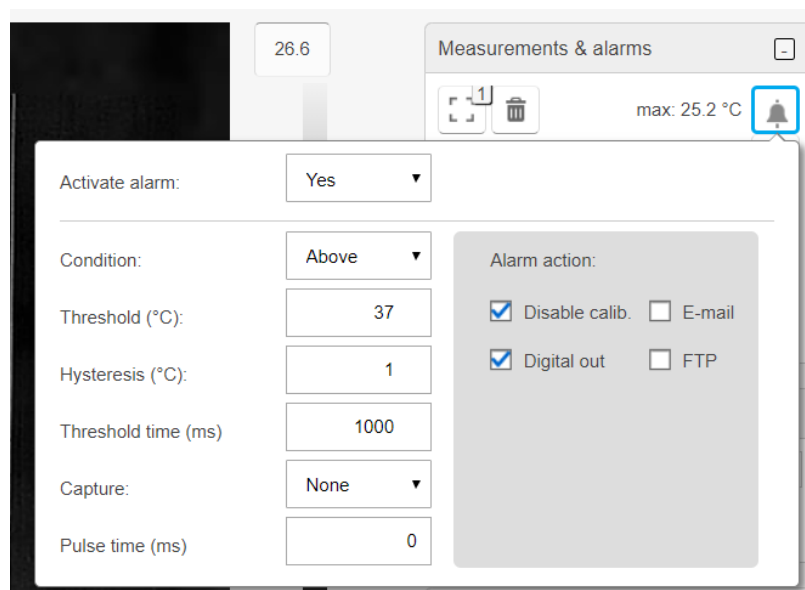
3-6. Temperature alarm setup (Sync with EZ Pro)

- AX8 Web Settings

- (1) After a *Box measurement* has been successfully added, the maximum, minimum and averaged temperature measured within the box will be displayed on the right.



- (2) Click the Bell icon to set an alarm. Then select **【Yes】** for the *Activate Alarm* settings and set alarm conditions.



【Alarm conditions description】

Condition : The condition is usually is set to *Above*, meaning that an alarm will be triggered when the temperature is above a certain threshold value.

Threshold: Enter the temperature of an integer value.

Hysteresis : It is the interval within which the temperature value is allowed to vary without triggering an alarm. The hysteresis is usually set at 1°C, which means the alarm will be cancelled after the temperature

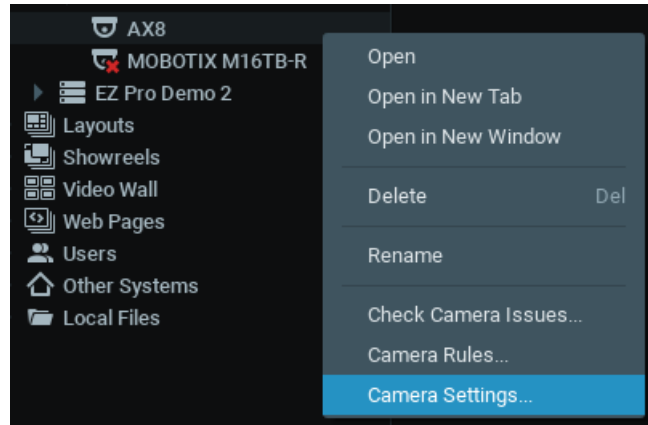
falls by 1°C . (E.g. If the alarm condition is set at 37°C, the alarm will cancel once the temperature drops below 36°C.)

- EZ Pro

【Camera recording setup】

To use EZ Pro's push notification function, (including alarm triggering and event recording etc.), the camera recording should be properly setup first.

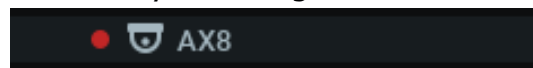
(1) Right-click on the camera name and select *Camera Settings*.



(2) In the **【Recording】** tab, turn on the recording and select **【all time frames】** on the "Recording Schedule"



(3) The small red dot next to the camera icon indicates that the camera is currently recording.



【Adding a new alarm rule】

EZ Pro can receive temperature data from AX8 and set event alarms.

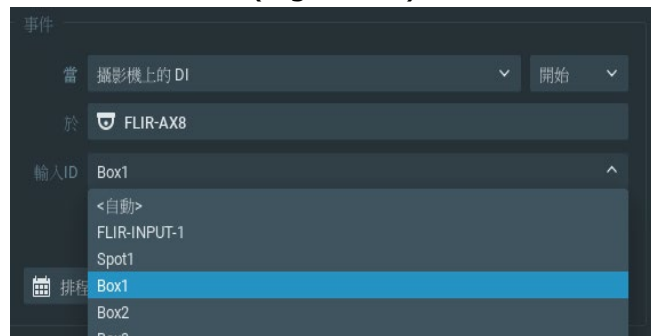
(1) Add a new event rule

【Main Menu】 > 【System Administration】 > 【Event Rules】
> 【Add Event Rules】



(2) Setting event rules

Select DI on *camera* and your "FLIR-AX8" camera. Then choose the alarm conditions (E.g.: box1).



(3) Setting an alarm action

Set an action to be executed by EZ Pro when alarm conditions are met. (E.g. Play sound, insert bookmark etc.; but only ONE action can be selected at a time. If the user wants EZ Pro to Play sound and insert bookmark at the same time, then two event rules are required.)



(4) Click *OK* and *Save* to complete alarm settings.