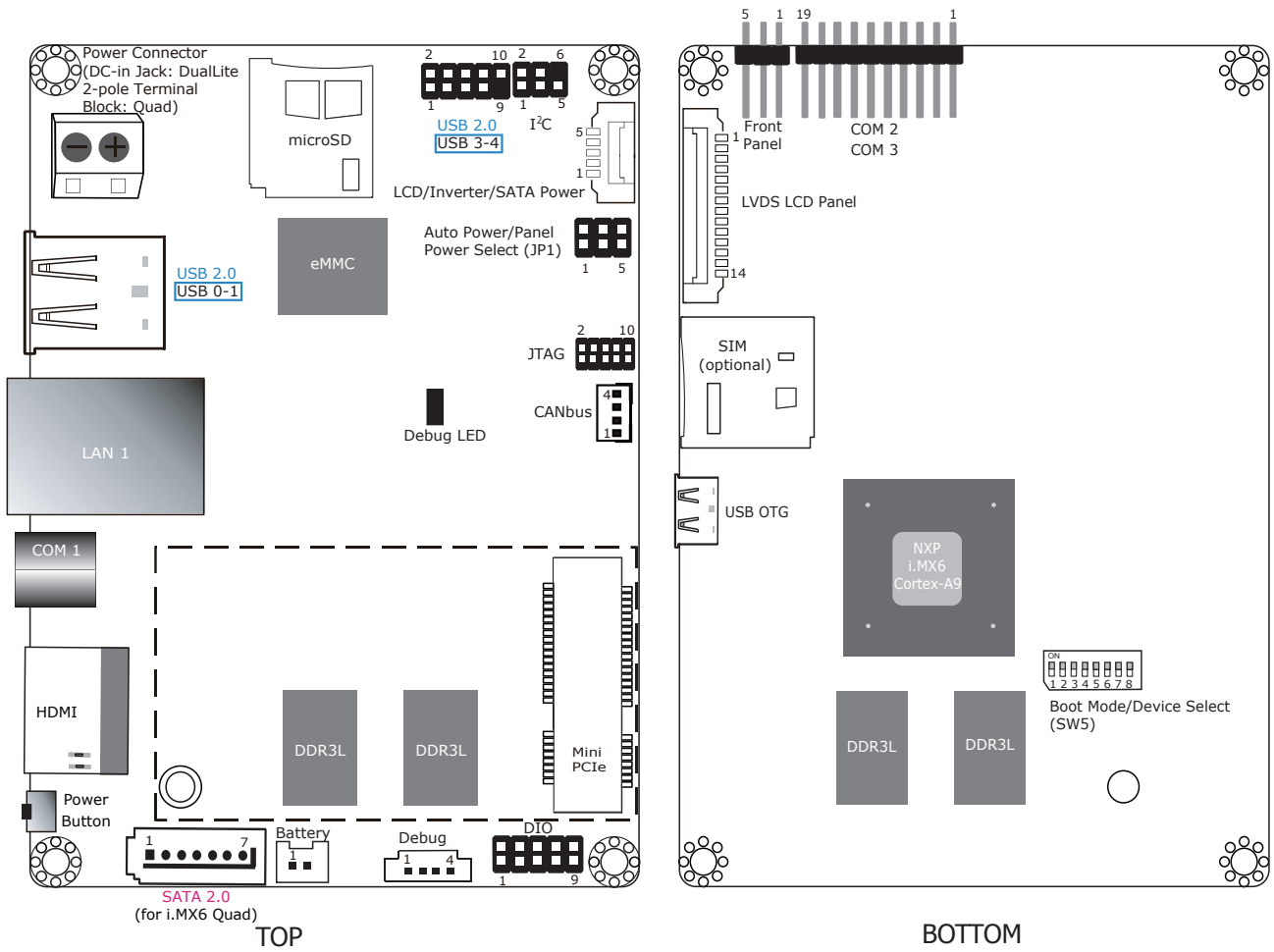


# DFI® FS051



| Panel Power & Power-on Select       | JP1    |
|-------------------------------------|--------|
| +3.3V (default)                     | 1-3 On |
| +5V                                 | 3-5 On |
| Power-on via power button (default) | 2-4 On |
| Auto power-on                       | 4-6 On |

| Boot Mode Select                       | SW5          |
|--|--------------|
| Boot from the fuses                    | 7 Off, 8 Off |
| Serial downloader                      | 7 On, 8 Off  |
| Boot from the board settings (default) | 7 Off, 8 On  |
| Reserved                               | 7 On, 8 On   |

| Boot Device Select | SW5 |     |     |     |     |     |     |    |
|--------------------|-----|-----|-----|-----|-----|-----|-----|----|
|                    | 1   | 2   | 3   | 4   | 5   | 6   | 7   | 8  |
| eMMC               | On  | On  | Off | Off | On  | On  | Off | On |
| SPI                | xx  | xx  | xx  | On  | On  | Off | Off | On |
| SD                 | On  | Off | On  | Off | Off | On  | Off | On |

## Battery Notice

---



### Battery Usage

The lithium ion battery powers the real-time clock. It is an auxiliary source of power when the main power is shut off.



### Safety Measures

- Danger of explosion if battery incorrectly replaced.
- Replace only with the same or equivalent type recommended by the manufacturer.
- Dispose of used batteries according to local ordinance.



### Mesure de Sécurité de l'usage de Batterie

- Danger d'explosion si la batterie n'est pas correctement remplacée.
- Remplacez seulement avec le même type ou équivalent recommandé par le fabricant.
- Traitez des batteries usées selon le règlement local.