



KS200/202 Installation Guide



KS200



KS202

Package Contents

- | |
|------------------------------|
| • 1 7" Touch Panel PC |
| • 1 Poron foam |
| • 1 24V power adapter |
| • 3 Terminal blocks |
| • 1 Quick Installation Guide |
| • 1 CD disk includes: |
| - Manual |



Note:

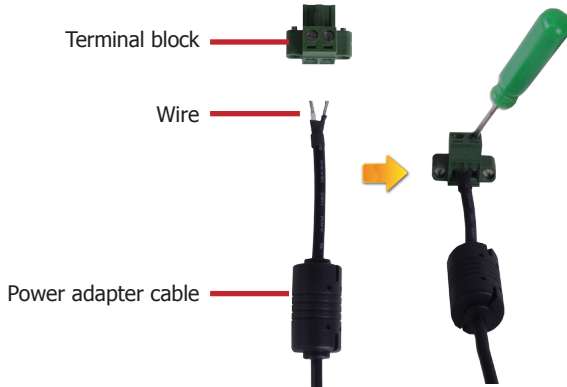
The CD that came with the system contains an autorun screen to install drivers, utilities, and software applications required to enhance the performance of the system and a user's manual for your reference. Insert the CD into a CD-ROM drive. The autorun screen will appear. If after inserting the CD, "Autorun" did not automatically start, please go directly to the root directory of the CD and double-click "Setup". Please install all required drivers.

DFI reserves the right to change the specifications at any time prior to the product's release. For the latest revision and for a more details of the installation process, please refer to the user's manual on the website.

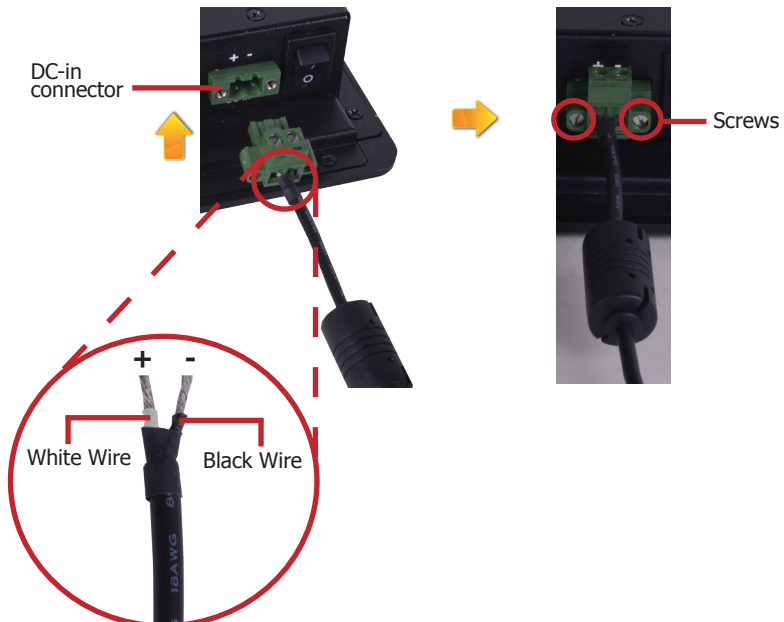
www.dfi.com

Connecting Cables to Terminal Blocks

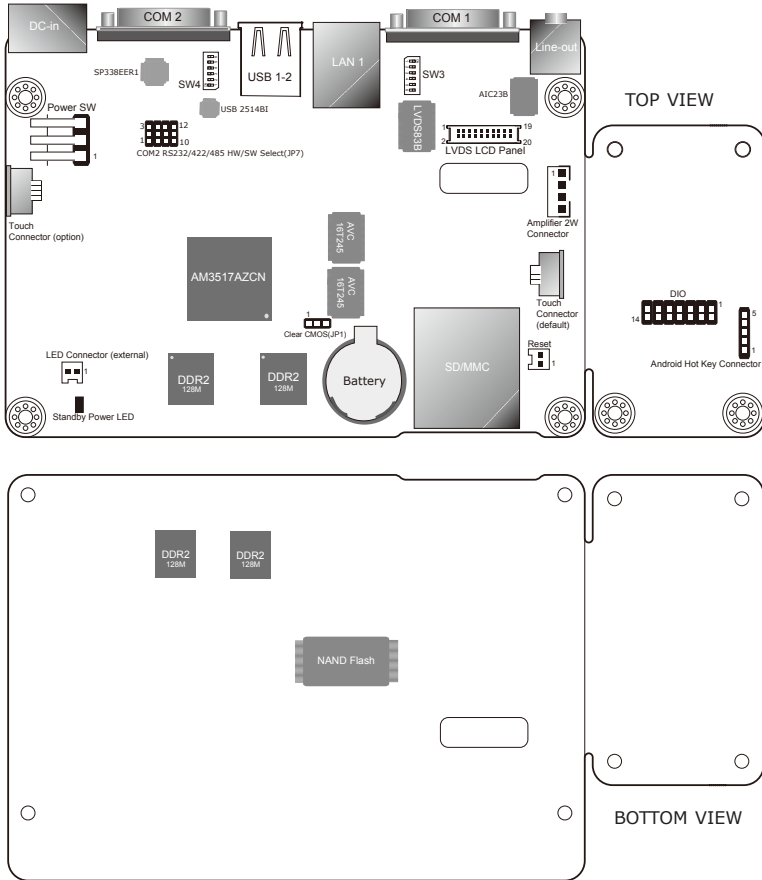
1. Insert the cable end of the power adaptor to the terminal block. To firmly fix the cable into the terminal block, use a screwdriver to clamp down the wires to the screw that is in the terminal block.



2. Plug the terminal block into the DC-in connector and then tighten the screws to secure the terminal block in place.



Board Layout and Jumper Settings



RS232/RS422/RS485 HW/SW Select: COM 2 (JP7)	
Set via Software	1-4-7-10 2-5-8-11 On
Set via Hardware	2-5-8-11 3-6-9-12 On

Boot Sequence (SW3)	
MMC Boot	1-4 On, 2-3 Off
NAND Boot	1-4 Off

Clear CMOS Data	JP1
Normal (default)	1-2 On
Clear CMOS Data	2-3 On

RS232/RS422/RS485 Select: COM 2(SW4)	
RS232	1 On, 2-3 Off
RS422	1-2 On, 3 Off
RS485	2 On, 1,3 Off

Note: If you use SW4 to select RS232/ RS422/ RS485, make sure JP7 is set to "Set via Hardware".