

# RM640

Rackmount Chassis for ATX/microATX



## KEY FEATURES



### 4U Rackmount Chassis

ATX/microATX motherboard



### Multiple Storage

Up to 1x 3.5"/2.5" SATA drive bay and 3 x optical drive bays



### Versatile I/O

2 USB 2.0 Type A, 1 Power Switch, 1 Reset Switch



### Multiple Expansion

7 Expansion slots



### Application Focus

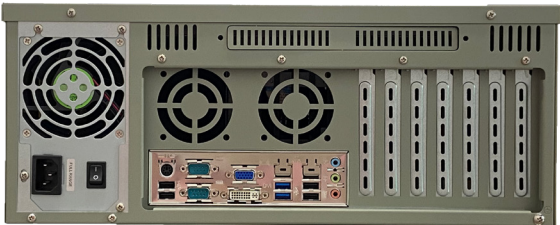
Industrial server grade



## PANEL

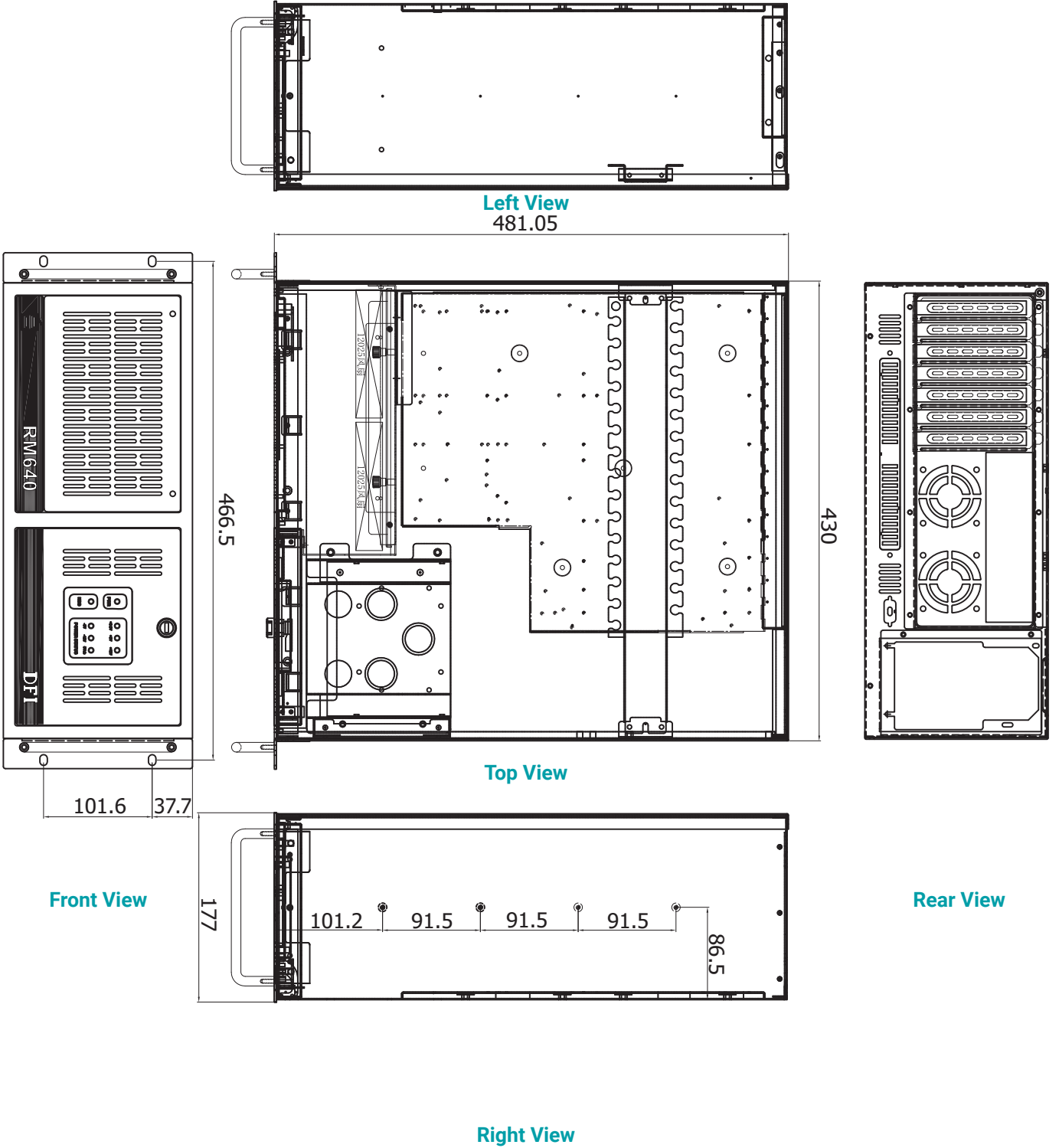


Front View



Rear View

# DIMENSIONS



## SPECIFICATION

<b>STORAGE</b>		3 x 5.25 " Optical / 1 x 3.5 " SATA Driver Bay 2 x 5.25 " Optical / 2 x 3.5 " SATA Driver Bay 2 x 5.25 " Optical / 2 x 2.5 " SATA Driver Bay 2 x 5.25 " Optical / 1 x 3.5" / 1 x 2.5" SATA Driver Bay
<b>EXPANSION</b>		7 x Expansion Slots
<b>LED</b>	<b>Indicators</b>	1 x Power LED 1 x HDD LED
<b>I/O</b>	<b>Front</b>	2 x USB 2.0 Type A
	<b>Buttons</b>	1 x Power Switch 1 x Reset Switch
<b>Power</b>	<b>Supply</b>	ATX PS/2 Power Supply AC Power Input : 90 ~ 264V
<b>ENVIRONMENT</b>	<b>Operating Temperature</b>	0 to 45°C
	<b>Storage Temperature</b>	-20 to 60°C
	<b>Relative Humidity</b>	0 to 90% RH (non-condensing)
<b>MECHANICAL</b>	<b>Construction</b>	SECC
	<b>Mounting</b>	Flexible Hold Down Bar
	<b>Dimensions (W x H x D)</b>	426mm x 177mm x 480mm
	<b>Weight</b>	11.4kg
<b>CERTIFICATION</b>	<b>Certification</b>	CE, FCC, RoHS, UKCA

## ORDERING INFORMATION

Model Name	Part Number	Description
RM640	623-RM4U12-000G	RM640 Chassis, RoHS

## PACKING LIST

• 1 RM640 Chassis
-------------------