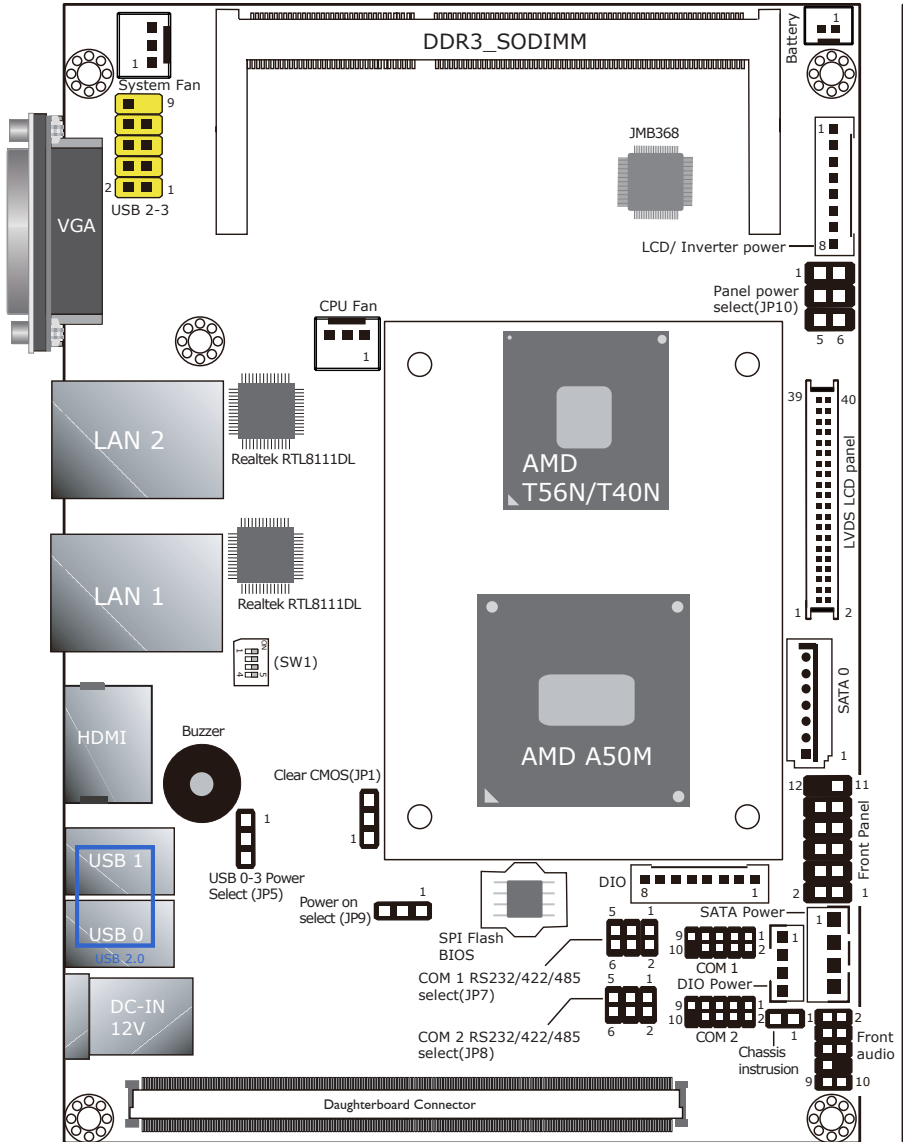
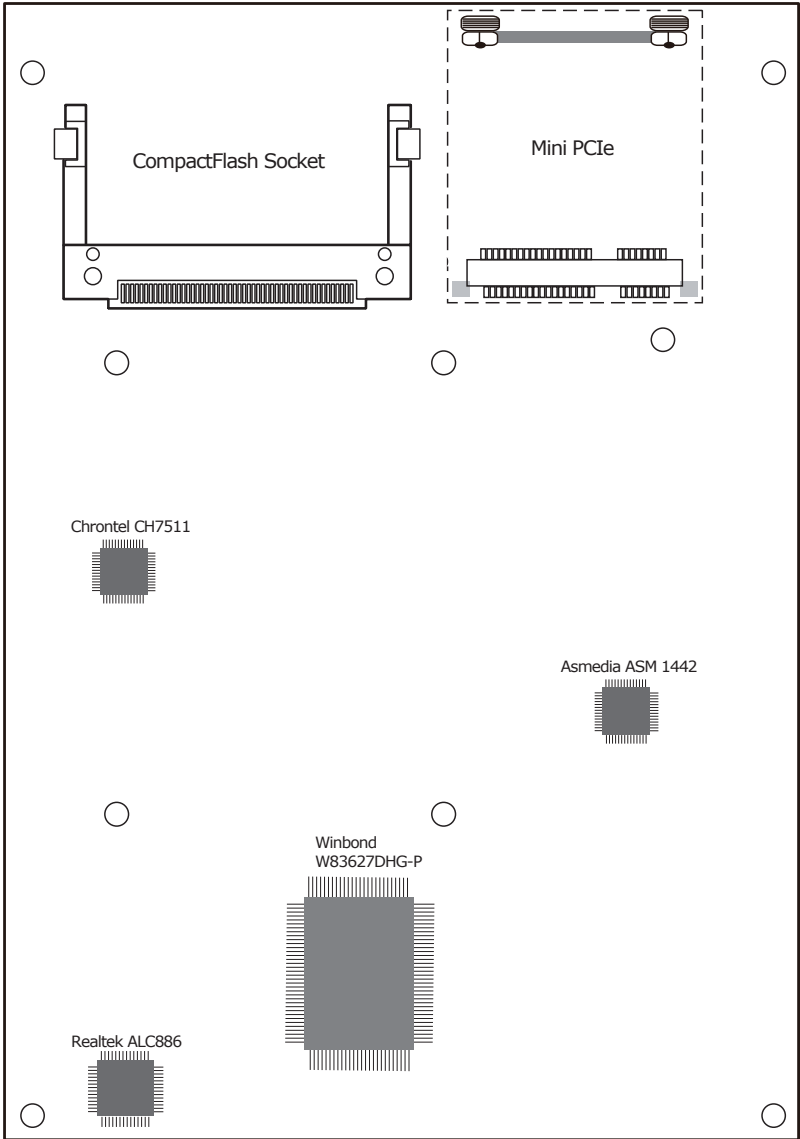


**Board Layout**





BOTTOM

## Jumper Settings

Clear CMOS Data	JP1
Normal (default)	1-2 On
Clear CMOS Data	2-3 On

LVDS Panel Select		Channel	SW1
800x600	6/18 bit	Single	1-4 On
1024x768	6/18 bit	Single	2-4 On, 1 Off
1024x768	8/24 bit	Single	1,3,4 On, 2 Off
1280X768	6/18 bit	Single	3-4 On, 1-2 Off
1280X800	6/18 bit	Single	1,2,4 On, 3 Off
1280X960	6/18 bit	Single	2,4 On, 1,3 Off
1280X1024	8/24 bit	Dual	1,4 On, 2,3 Off
1366X768	6/18 bit	Single	4 On, 1-3 Off
1366X768	8/24 bit	Single	1-3 On, 4 Off
1440X900	8/24 bit	Dual	2-3 On, 1,4 Off
1400X1050	8/24 bit	Dual	1,3 On, 2,4 Off
1600X900	8/24 bit	Dual	3 On, 1,2,4 Off
1680X1050	8/24 bit	Dual	1-2 On, 3-4 Off
1600X1200	8/24 bit	Dual	2 On, 1,3,4 Off
1920X1080	8/24 bit	Dual	1 On, 2-4 Off
1920X1200	8/24 bit	Dual	1-4 Off

USB Power: 0-3	JP5
5V (default)	1-2 On
5V_standby	2-3 On

Panel Power Select	JP10
+12V	1-2 On
+5V	3-4 On
+3.3V (default)	5-6 On

Power-on Select	JP9
Power-on via power button (default)	1-2 On
Auto power-on	2-3 On

COM 1 RS232/RS422/RS485 Select (JP7)	
RS232 (default)	1-2 On
RS422 Full Duplex	3-4 On
RS485	5-6 On

COM 2 RS232/RS422/RS485 Select (JP8)	
RS232 (default)	1-2 On
RS422 Full Duplex	3-4 On
RS485	5-6 On

## Battery Usage

The lithium ion battery powers the real-time clock and CMOS memory. It is an auxiliary source of power when the main power is shut off.

## Safety Measures

- Danger of explosion if battery incorrectly replaced.
- Replace only with the same or equivalent type recommend by the manufacturer.
- Dispose of used batteries according to local ordinance.

## Mesure de Sécurité de l'usage de Batterie

Batterie:

- Danger d'explosion si la batterie n'est pas correctement remplacée.
- Remplacez seulement avec le même type ou équivalent recommandé par le fabricant.
- Traitez des batteries usées selon le règlement local.



DFI reserves the right to change the specifications at any time prior to the product's release. This QR may be based on editions that do not resemble your actual products. For more documentation and drivers, please visit the download page at [go.dfi.com/OT951-D](https://go.dfi.com/OT951-D), or via the QR code to the right.

