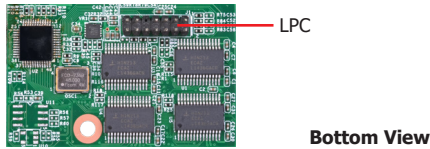
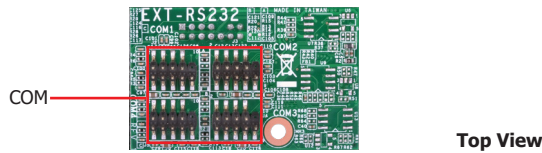
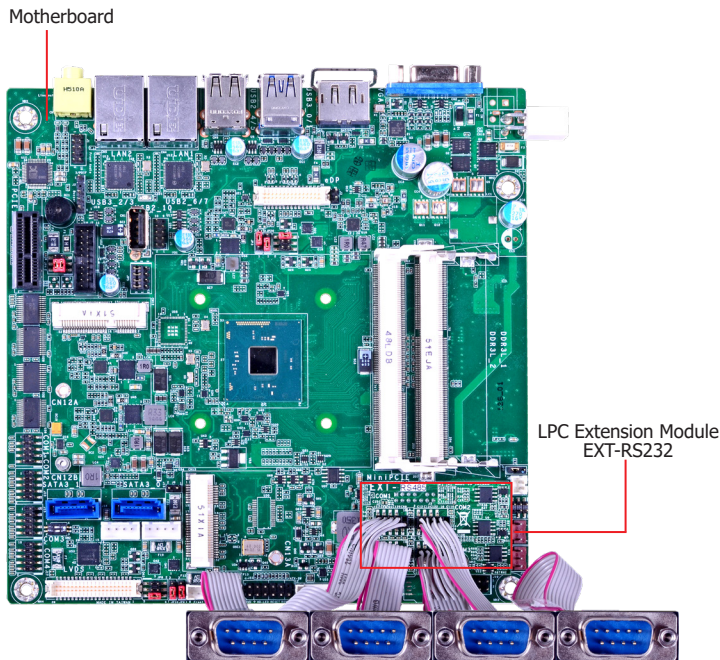
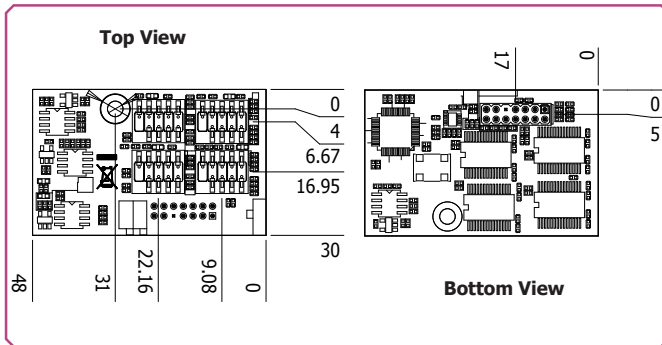


EXT-RS232



Mechanical Drawing



Features

CHIP	NCT5104
PORT	4 COM (RS232)
INTERFACE	LPC
DIMENSIONS	48mm x 30mm (1.89" x 1.18")

Specifications

CHIP

- Main IC: NCT5104



I/O CONNECTORS

- 1 LPC connector
- 4 connectors for 4 external RS232 serial ports (2.0mm pitch)

POWER INPUT

- 3.3V/5V/5VSB via LPC connector

APPLIED MODELS

- SD631-C236/Q170, SD630-H110, SD331-C236/Q170, SD331-Q170/H110, SD101/SD103-Q170/H110, SD100-Q170/H110, SU171/SU173, BW171/BW173

TEMPERATURE

- Operating: 0°C to 60°C
- Storage: -40°C to 85°C

HUMIDITY

- 5% to 90%

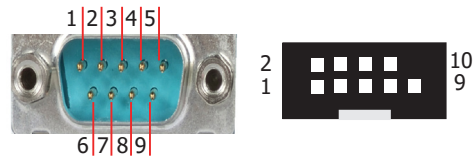
DIMENSIONS

- 48mm x 30mm (1.89" x 1.18")

Packing List

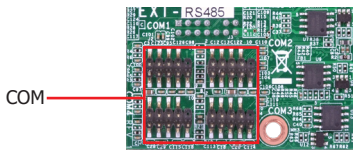
• 1 EXT-RS232 module	770-EXTRS1-000G
• 4 COM port cable (Length: 250mm)	A81-017001-001G

PIN Definition

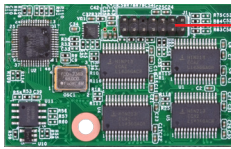


Pin	RS232
1	DCD-
2	RXD
3	TXD
4	DTR-
5	GND
6	DSR-
7	RTS-
8	CTS-
9	RI-

EXT-RS485

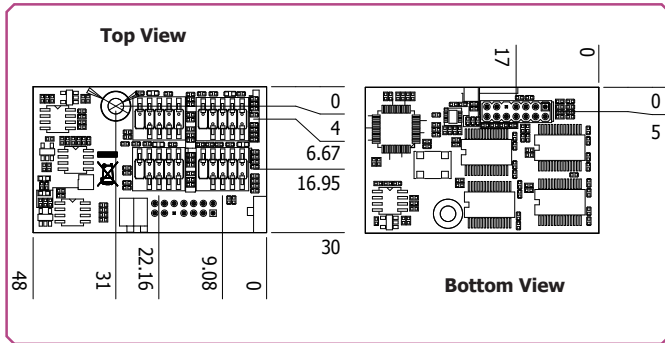


Top View



Bottom View

Mechanical Drawing



Features

CHIP	NCT5104
PORT	4 COM (RS485)
INTERFACE	LPC
DIMENSIONS	48mm x 30mm (1.89" x 1.18")

Specifications

CHIP

- Main IC: NCT5104

I/O CONNECTORS

- 1 LPC connector
- 4 connectors for 4 external RS485 serial ports (2.0mm pitch)

POWER INPUT

- 3.3V/5V/5VSB via LPC connector

APPLIED MODELS

- SD631-C236/Q170, SD630-H110, SD331-C236/Q170, SD331-Q170/H110, SD101/SD103-Q170/H110, SD100-Q170/H110, SU171/SU173, BW171/BW173

TEMPERATURE

- Operating: 0°C to 60°C
- Storage: -40°C to 85°C

HUMIDITY

- 5% to 90%

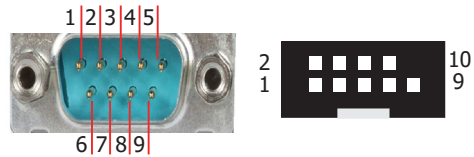
DIMENSIONS

- 48mm x 30mm (1.89" x 1.18")

Packing List

• 1 EXT-RS485 module	770-EXTRS1-100G
• 4 COM port cable (Length: 250mm)	A81-017001-001G

PIN Definition



Pin	RS485
1	DATA+
2	DATA-
3	N.C.
4	N.C.
5	GND
6	N.C.
7	N.C.
8	N.C.
9	N.C.

