



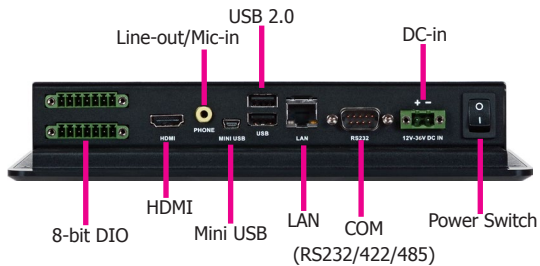
KS070-FS Installation Guide



Top Panel I/O Ports



Bottom Panel I/O Ports



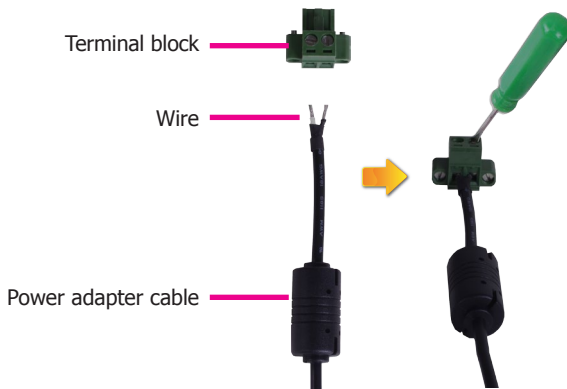
DFI reserves the right to change the specifications at any time prior to the product's release. This QIG is based on versions that may not resemble your actual products. For the latest revision and details of the installation process, please refer to related technical docs on our website at <http://go.dfi.com/KS070-FS>.



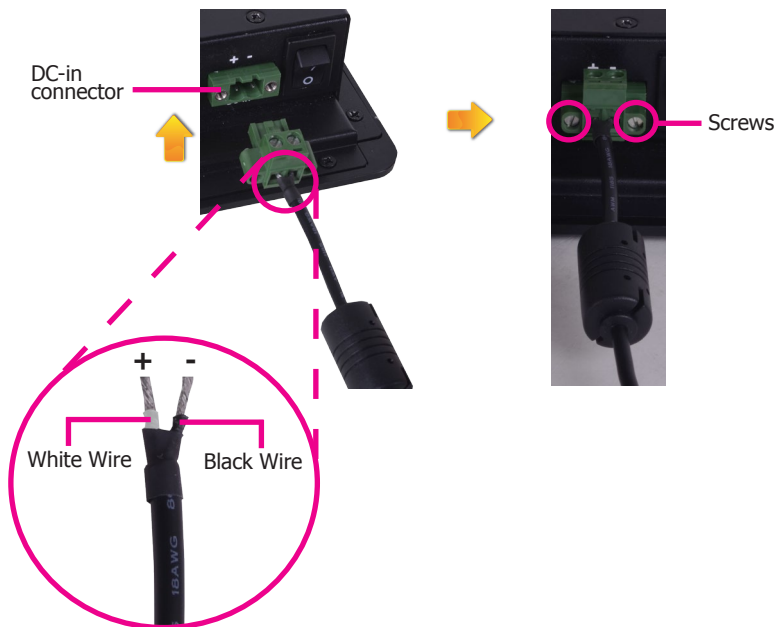
Connecting the Cable to the Terminal Block

The system's power connector is a two-pole terminal block. Please insert the corresponding end ("+" or "-") of a power adaptor to the respective pole of the terminal block.

1. Insert the cable end of the power adaptor to the terminal block. To firmly fix the cable into the terminal block, use a screwdriver to clamp down the wires to the screw that is in the terminal block.



2. Plug the terminal block into the DC-in connector and then tighten the screws to secure the terminal block in place.



Removing the Chassis Cover

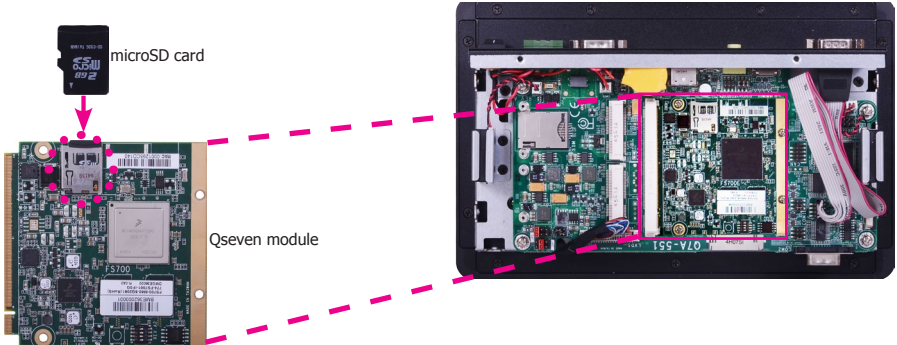
Before working inside the system, make sure the system has been powered off and disconnect all power cords and cables.

The 8 mounting screws on the sides and bottom of the system are used to secure the cover to the chassis. Remove these screws and the COM port screws.



Installing the microSD Card

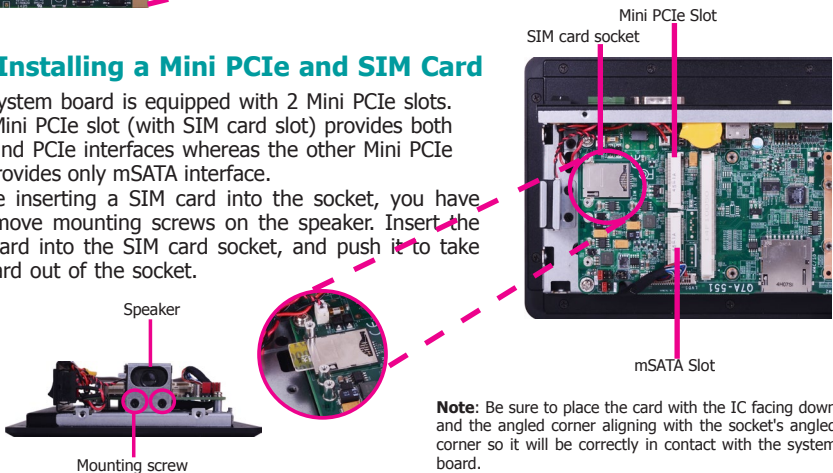
The microSD slot is located on the Qseven module internally. You may need to remove the Qseven module first to access the card slot. Then insert the card straight into the socket.



Installing a Mini PCIe and SIM Card

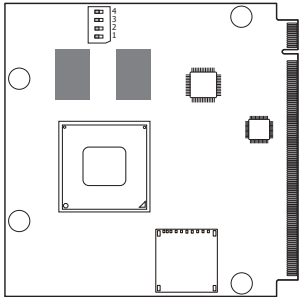
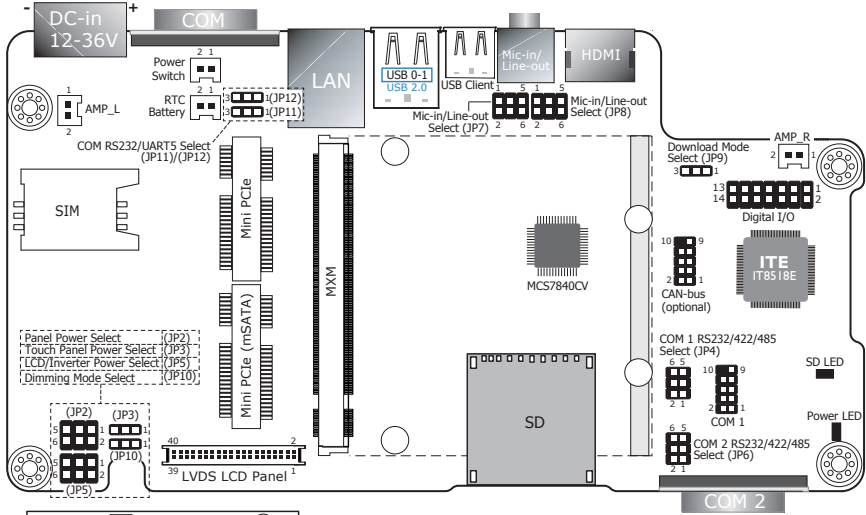
The system board is equipped with 2 Mini PCIe slots. One Mini PCIe slot (with SIM card slot) provides both USB and PCIe interfaces whereas the other Mini PCIe slot provides only mSATA interface.

Before inserting a SIM card into the socket, you have to remove mounting screws on the speaker. Insert the SIM card into the SIM card socket, and push it to take the card out of the socket.



Note: Be sure to place the card with the IC facing down and the angled corner aligning with the socket's angled corner so it will be correctly in contact with the system board.

Board Layout and Jumper Settings



Boot Device Select	Switch
eMMC	1 Off, 2 Off, 3 On, 4 On
uSD	1 Off, 2 Off, 3 On, 4 Off
SPI3 on board SPI	1 On, 2 On, 3 Off, 4 On
SPI1 on carrier board	1 On, 2 Off, 3 Off, 4 On

Dimming Mode Select	JP10
PWM Mode (default)	1-2 On
Voltage Mode	2-3 On

Line-out/Mic-in Select	JP7 (for Line-out), JP8 (for Mic-in)
Line-out (JP7)	1-2, 3-4, 5-6 On
Mic-in (JP8)	1-2, 3-4, 5-6 On

COM 1 / COM 2 RS232/422/485 Select	JP4 (for COM 1), JP6 (for COM 2)
RS232 (default)	1-2 On
RS422	3-4 On
RS485	5-6 On

LCD/Inverter Power Select	JP5
+12V	1-2 On
+5V Standby (default)	3-4 On
+3V Standby	5-6 On

LCD Panel Power Select	JP2
+12V	1-2 On
+5V Standby	3-4 On
+3V Standby (default)	5-6 On

Dimming Mode Select	JP5
+12V	1-2 On
+5V Standby (default)	3-4 On
+3V Standby	5-6 On

Touch Panel Power Select	JP3
+5V Standby	1-2 On
+3V Standby (default)	2-3 On

Download Mode Select	JP9
Serial Download Mode	1-2 On
Normal Boot (default)	2-3 On

933-KS0702-000G
DVT
A55701930
Aug 20, 2019