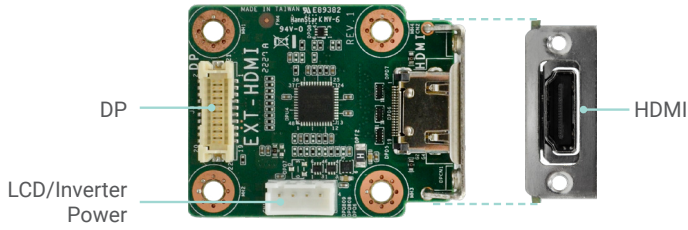


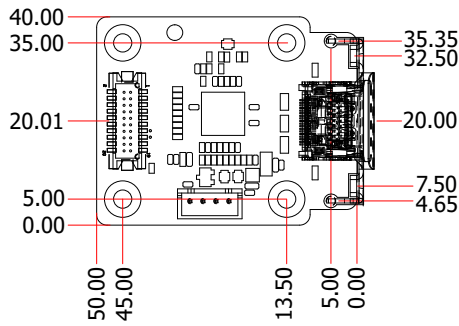
EXT-HDMI



KEY FEATURES

CHIP	ASM1442K
PORTS	HDMI Connector LCD/Inverter Power connector
INTERFACE	1 HDMI
DIMENSIONS	50 x 40 mm
APPLICABLE MODELS	ADS101/ADS103

MECHANICAL DRAWING



SPECIFICATION

CHIP	Re-Driver ASM1442K
FEATURES	Support Full HD resolution up to 1920x1080
REAR PANEL I/O	1 HDMI port
APPLIED MODEL	ADS101/ADS103
TEMPERATURE	Operating: -20°C to 70°C Storage: -40°C to 85°C
HUMIDITY	5% to 90%
DIMENSIONS	50mm x 40mm (1.97" x 1.58")

ORDERING INFORMATION

Model Name	Part Number	Description
EXT-HDMI	770-DP2HDM-000G	DP-to-HDMI 1.4 MODULE CARD

OPTIONAL ITEMS

Model Name	Part Number	Description
HDMI-Bracket	A31-028957-050G	BRACKET IO SLOT, SGCC T=1.0mm, FOR EXT-HDMI(LC)RoHS

