



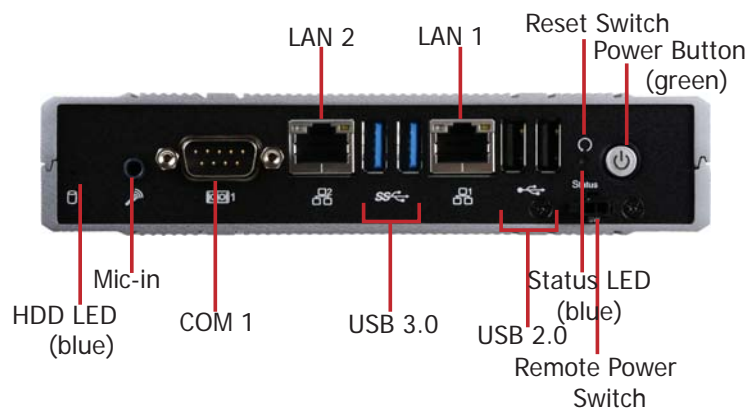
EC800-AL Installation Guide

Package Contents

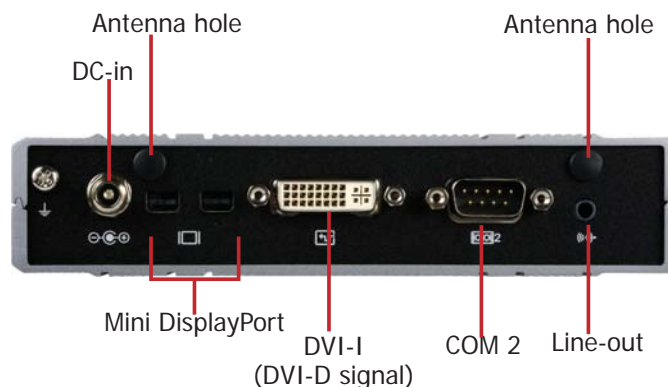
• 1 EC800-AL system unit
• Mounting screws for Mini PCIe modules
• Accessories for M.2 modules
• 1 Quick Installation Guide
• 1 CD disk includes:
- Drivers / Manual

Panel

Front View



Rear View



Note:

The system offers another SKU with a different combination of display outputs: VGA + 2 Micro HDMI. It also supports dual-display and triple-display functions: VGA + 2 Micro HDMI or DVI + 2 Mini DP.

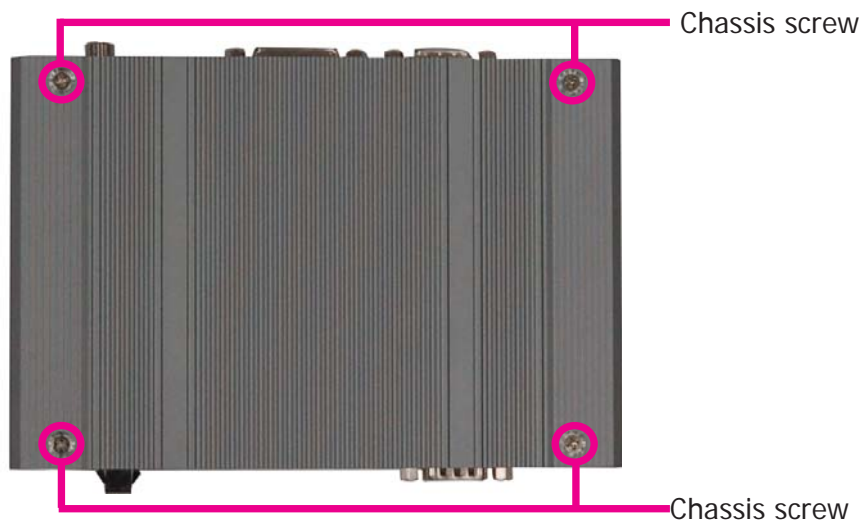
DFI reserves the right to change the specifications at any time prior to the product's release. For the latest revision and details of the installation process, please refer to the user's manual.

www.dfi.com

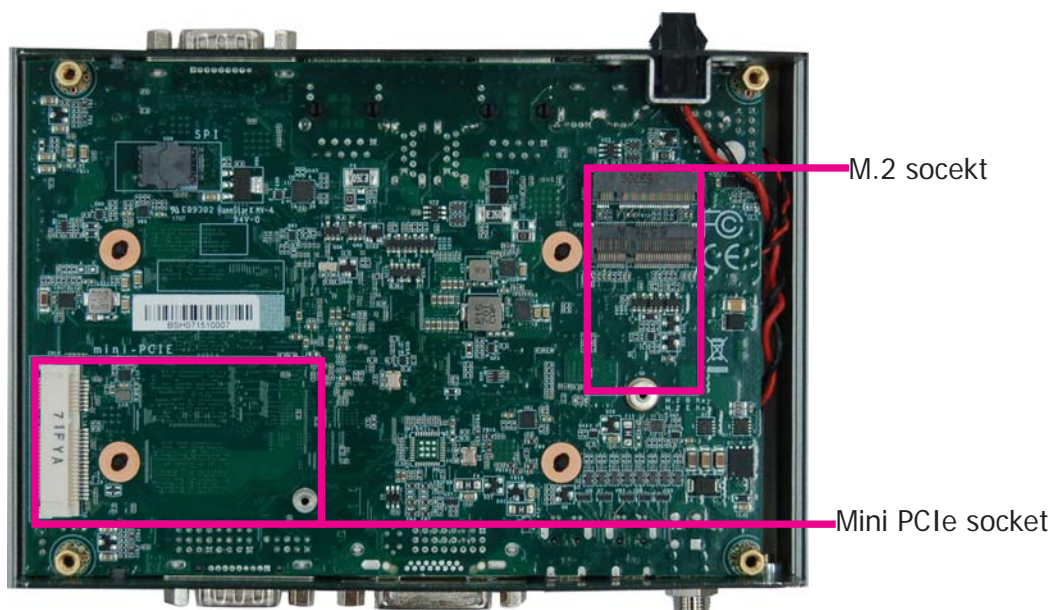
Removing the Chassis Cover

Please observe the following guidelines and follow the procedure to open the system.

1. Make sure the system and all other peripheral devices connected to it have been powered off.
2. Disconnect all power cords and cables.
3. The 4 mounting screws on the bottom side of the system are used to secure the cover to the chassis. Remove these screws and then put them in a safe place for later use.



4. Lift the cover to open the system. The M.2 and Mini PCIe sockets are readily accessible after removing the bottom cover.



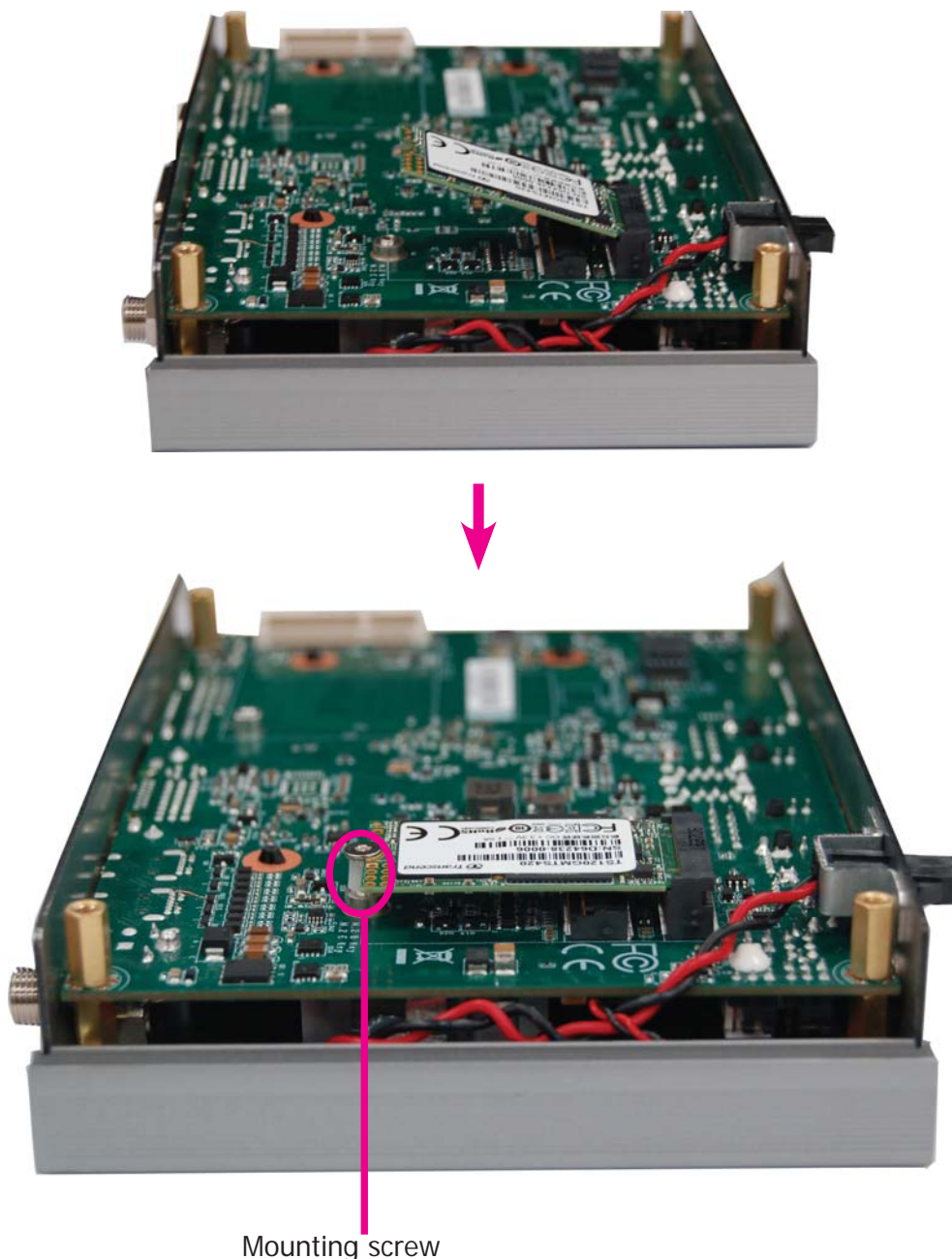


Installing an M.2 Card

The system is equipped with two M.2 sockets, supporting one M.2 22x42mm (B key) and one M.2 22x30mm (AE key) form factor.

To install a 42mm M.2 card:

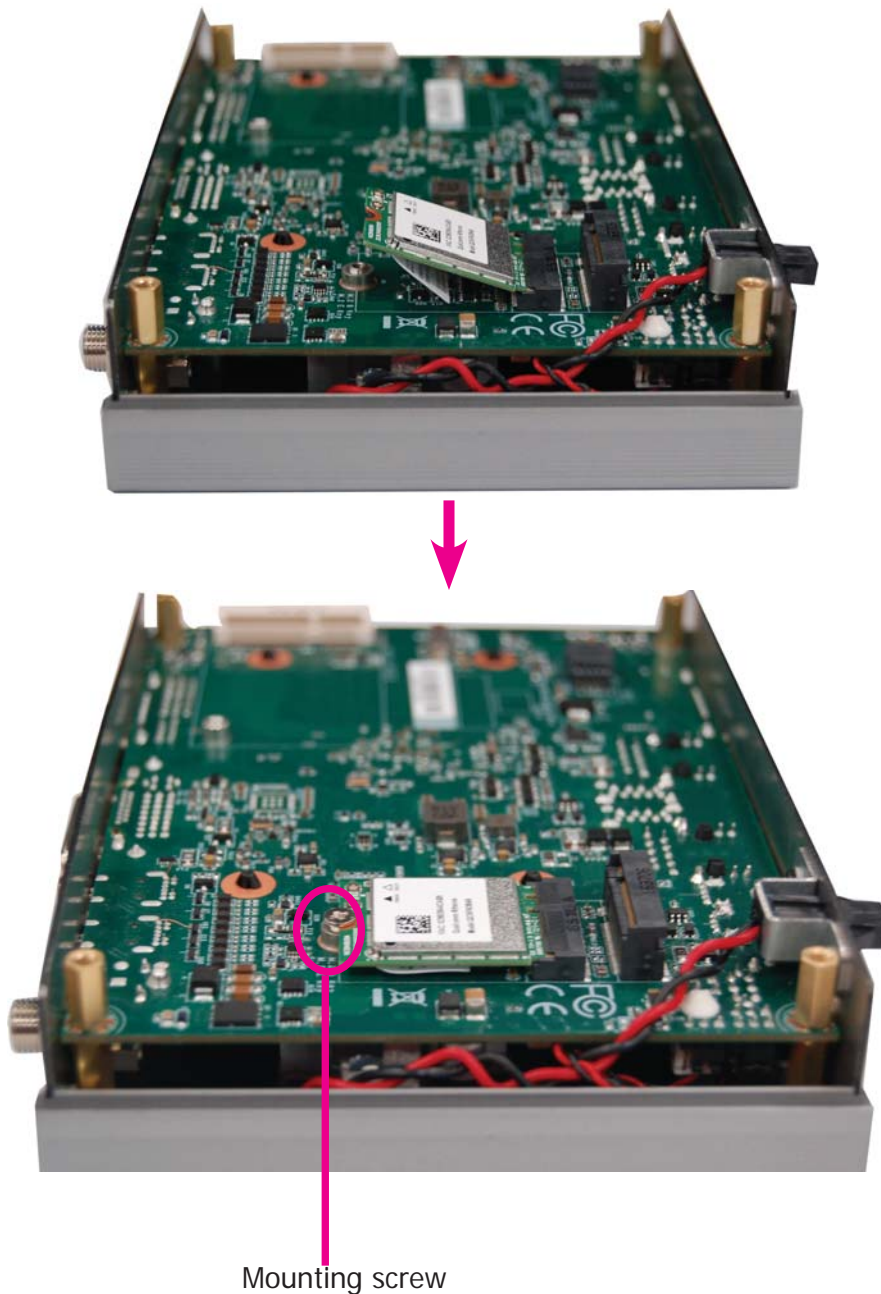
1. Align the notch at the edge of the M.2 card with the key in the connector.
2. Insert the M.2 card into the connector.
3. Place the plastic spacer on top of the screw hole; push down on the other end of the M.2 card and use the provided mounting screw (the longer one) to secure the card on the system board.



Mounting screw

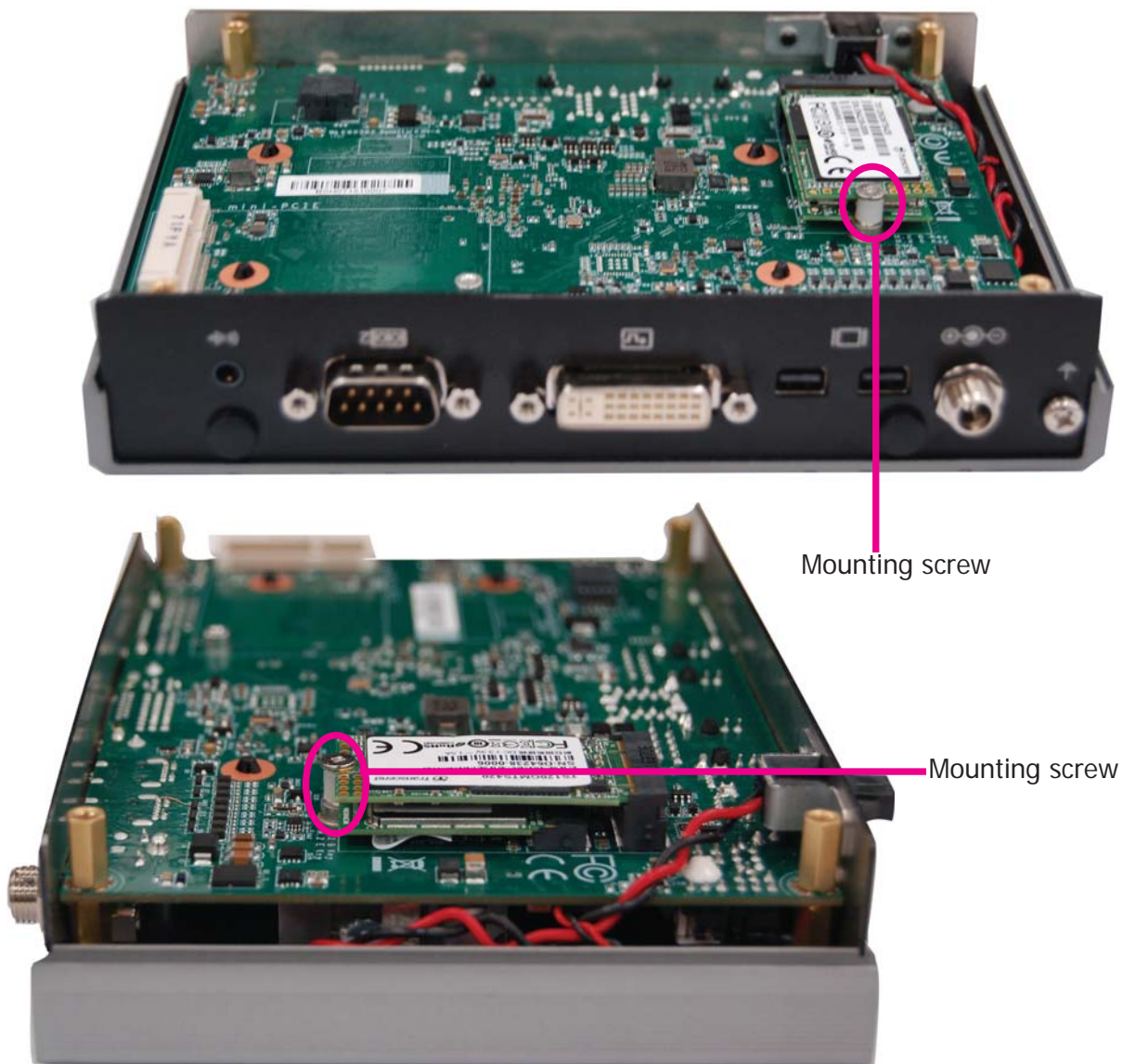
To install a 30mm M.2 card:

1. Align the notch at the edge of the M.2 card with the key in the connector.
2. Insert the M.2 card into the connector.
3. Push down on the other end of the M.2 card and use the provided mounting screw (the shorter one) to secure the card on the system board.



To install both 42mm and 30mm M.2 cards:

1. Align the notch at the edge of the 30mm M.2 card with the key in the connector.
2. Insert the 30mm M.2 card into the connector.
3. Push down on the other end of the card and place the plastic spacer on top of the card.
4. Insert the 42mm M.2 card into the connector.
5. Push down on the other end of the card and use the provided mounting screw (the longer one) to secure both cards on the system board.



Notes:

1. The 42mm M.2 slot provides PCIe, USB, and SATA signals (for common mobile broadband and storage modules) whereas the 30mm M.2 slot provides only PCIe and USB signals (for common Wi-Fi and Bluetooth modules).
2. To switch between PCIe and SATA signals for the 42mm M.2 slot, refer to Jumper Settings below.



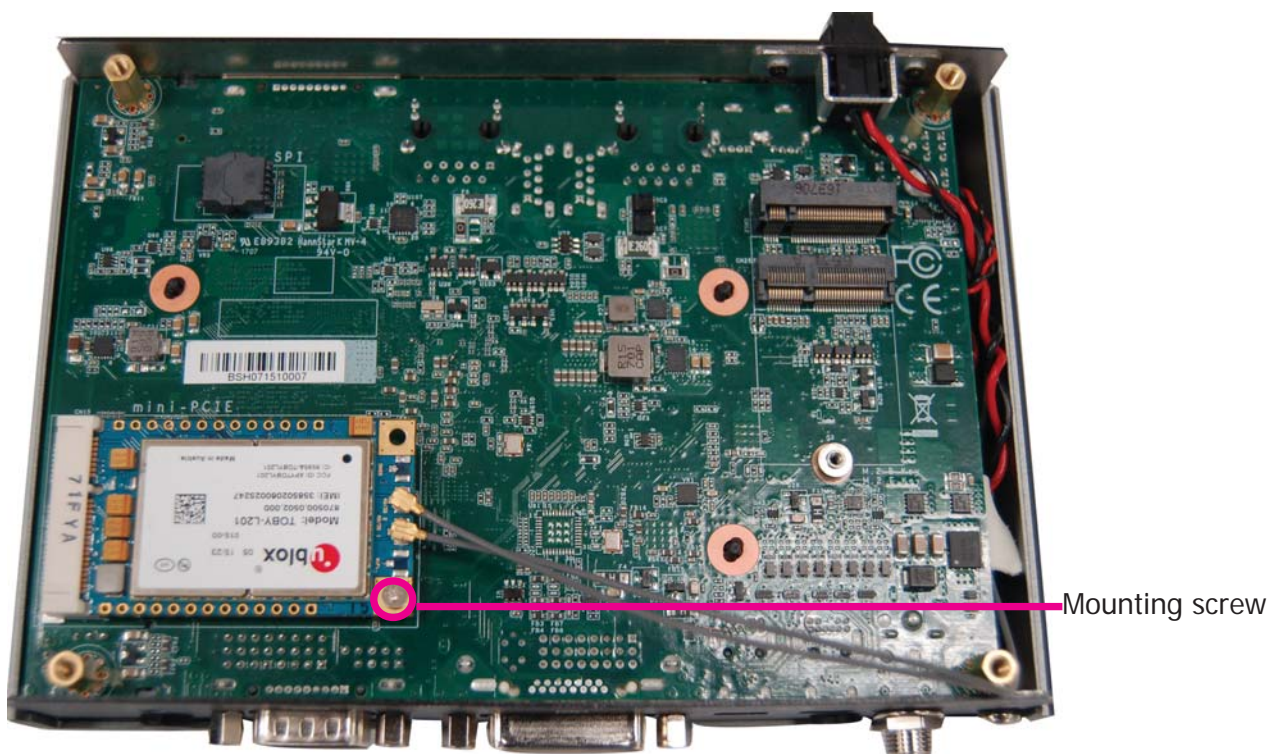
Installing a Mini PCIe or an mSATA Card

The system board is equipped with 1 Mini PCIe slot.

1. Grasp the Mini PCIe card by its edges and align the notch of the PCIe card with the key in the connector on the system board.



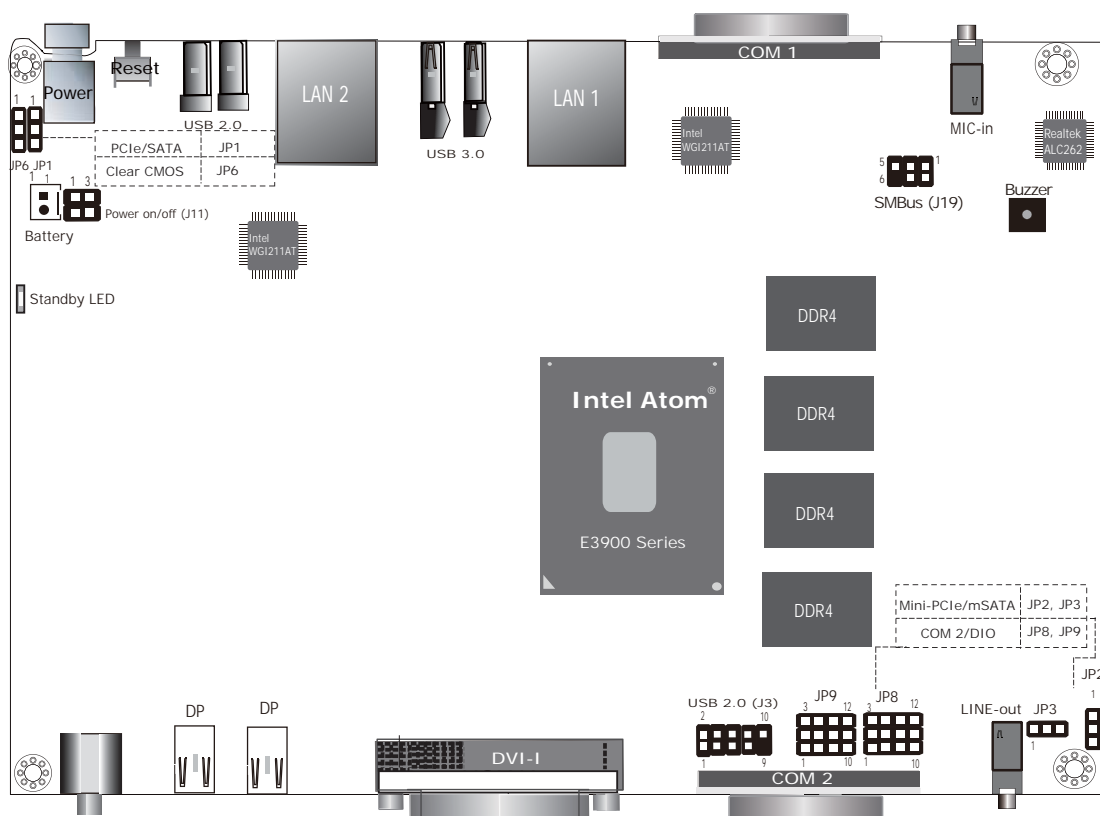
2. Push down on the other end of the Mini PCIe card and use the provided mounting screw to secure the card on the system board.



Notes:

1. This Mini PCIe slot can accommodate either a Mini PCIe or an mSATA card; refer to Jumper Settings for signal selection for this slot.
2. If installing a wireless module, route the antenna cable(s) along the side of the chassis and underneath the system board to reach the antenna holes.

Board Layout and Jumper Settings



Clear CMOS Data	JP6
Normal	1-2 On (default)
Clear CMOS	2-3 On

COM2 / DIO Pin Select	JP8, JP9
COM	1-2, 4-5, 7-8, 10-11 On (default)
DIO	2-3, 5-6, 8-9, 11-12 On

Mini PCIe (CN15) PCIe/SATA Select	JP2, JP3
mSATA	1-2 On (default)
Mini PCIe	2-3 On

22x42mm M.2 (CN12) PCIe/SATA Select	JP1
SATA	1-2 On (default)
PCIe	2-3 On

Note:

You cannot use COM 2 and DIO at the same time. Please set JP8 and JP9 together.