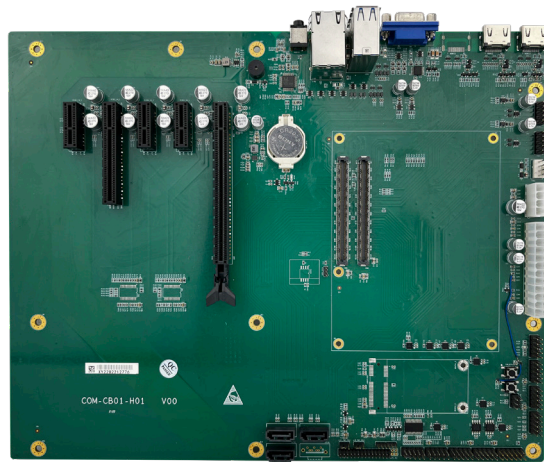
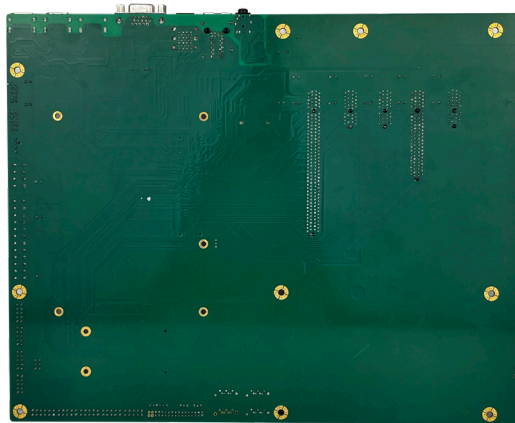


COM6CB

COM Express® Carrier Board



Top View



Bottom View

KEY FEATURES



PCIe

1 x PCIe x16
1 x PCIe x8
3 x PCIe x1



HDMI

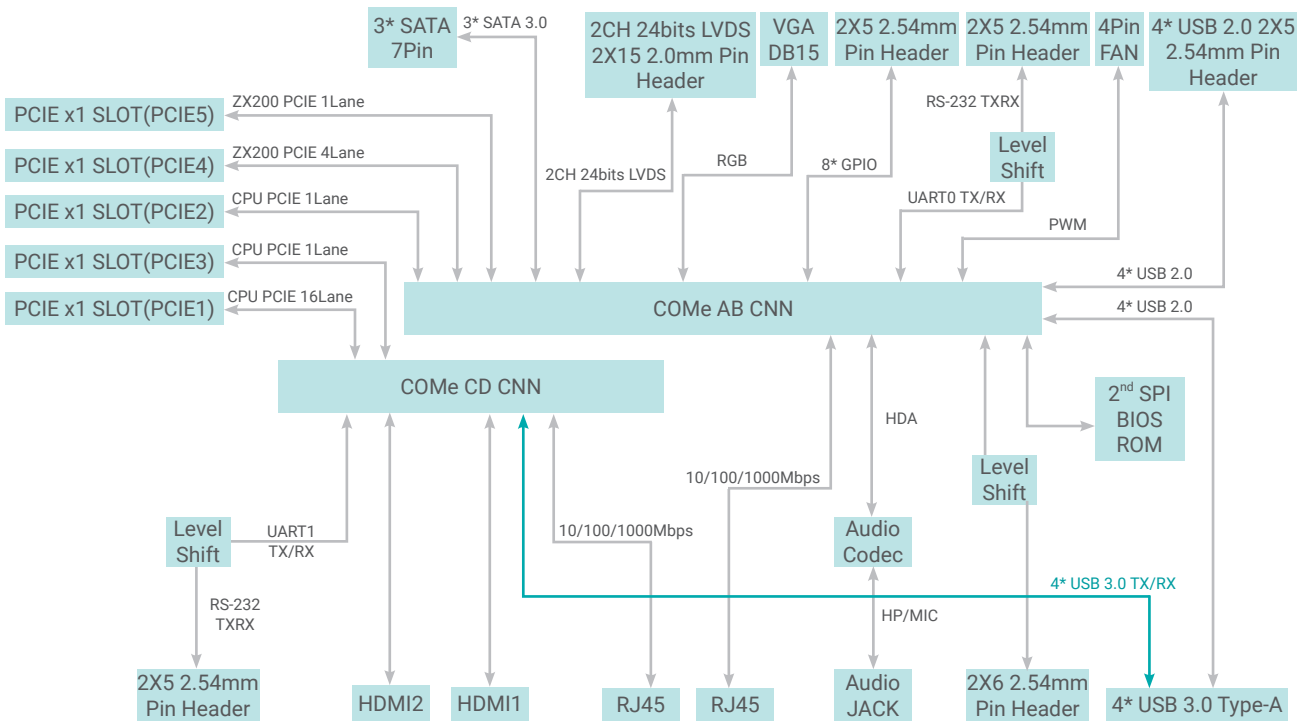
2 HDMI



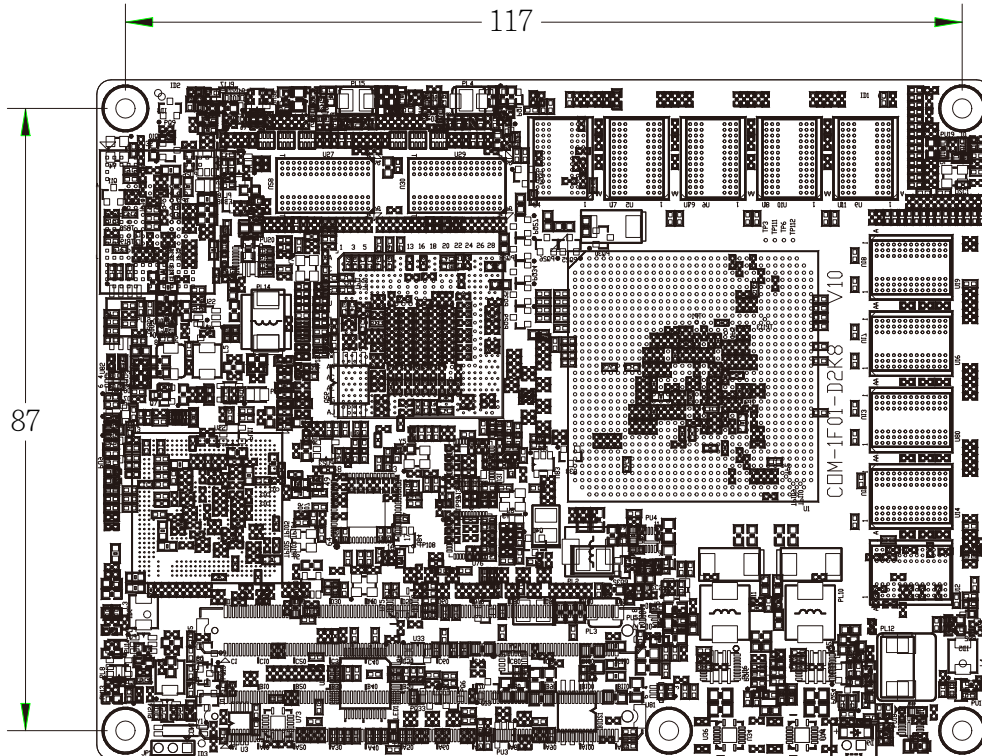
VGA

1 VGA

BLOCK DIAGRAM



MECHANICAL DRAWING



SPECIFICATION

| | | | |
|--------------|--------------|---|----------------------|
| GRAPHICS | Display | 2 x HDMI 1 x VGA | |
| | Quad Display | 2 HDMI + VGA | |
| EXPANSION | Interface | 1 x PCIE x16 1 x PCIE x8 3 x PCIE x1 | |
| REAR I/O | Ethernet | 2 x 10/100/1000Mbps RJ45 | |
| | USB | 4 x USB 3.0 type A | |
| | Display | 2 x HDMI 1 x VGA | |
| | Audio | 1 x TRRS audio jack | |
| INTERNAL I/O | Serial | 3 x URAT (TX/RX) 1 x RS232 8 x GPIO 2 x CAN bus | |
| | Display | 1 x 2CH 24bits LVDS | |
| | USB | 4 x USB 2.0 | |
| | SATA | 3 x SATA | |
| | LPC | 1 x LPC | |
| | SMBus | 1 x SMBus | |
| | I2C | 2 x I2C | |
| POWER | Type | 1 x 2*4-pin ATX 12V power 1 x 24-pin ATX power | |
| | RTC Battery | CR2032 Coin Cell | |
| ENVIRONMENT | Temperature | Operating: 0 to 55°C -40 to 55°C | Storage: -40 to 75°C |
| MECHANICAL | Dimensions | ATX Form Factor | 305mm x 244mm |
| | Compliance | PICMG COM Express® R2.1, Type 6 Basic, Compact Modules | |

ORDERING INFORMATION

| Model Name | P/N | GbE | USB 3.0 | USB 2.0 | Operating Temp. |
|------------|-----------------|-----|---------|---------|-----------------|
| COM6CB | 790-COM6CB-000G | 2 | 4 | 4 | 0 to 55°C |
| COM6CB | 790-COM6CB-100G | 2 | 4 | 4 | -40 to 55°C |

PACKING LIST

| |
|----------------|
| 1 COM6CB board |
|----------------|