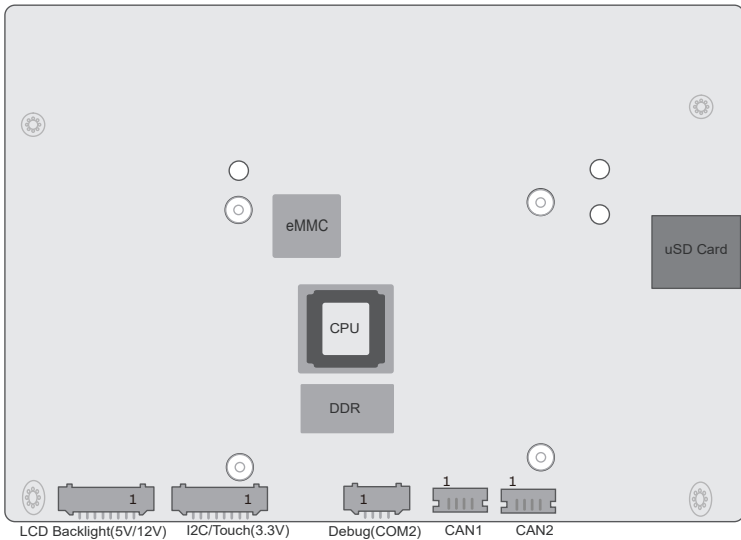
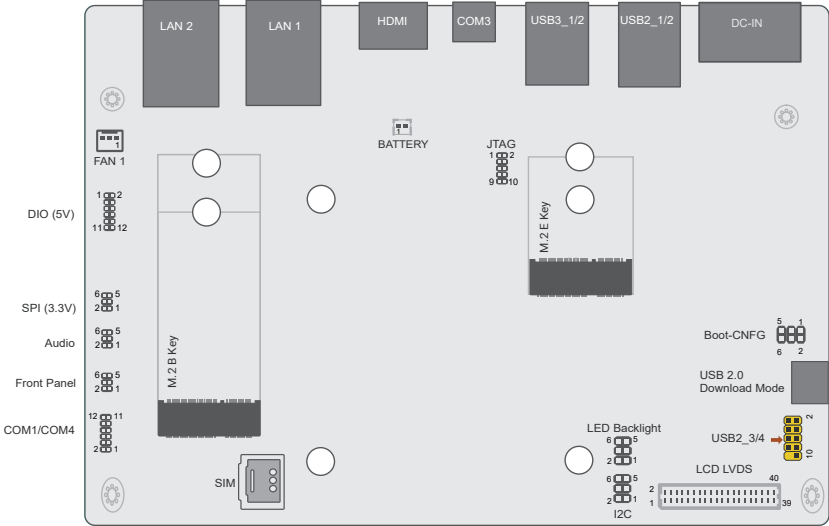


## Board Layout



# Jumper Settings

LED Backlight	BLJP1
5V	1-3 On
3.3V (default)	1-2 On
Backlight Power 12V (default)	5-6 On
Backlight Power 5V	4-6 On

	Boot-CNFG	JP1
Boot Mode	Internal Boot (default)	1-2 Off
	Serial Downloader	1-2 On
	NC	3-4
Boot Device	EMMC (default)	5-6 Off
	uSD	5-6 On

# Pin Assignments for I/O Connectors

## Debug Port (COM2, J10)

Pin	Assignment
1	+3.3V
2	UART2_RX
3	UART2_TX
4	GND

## CAN1 (CBCN1)

Pin	Function
1	+5V
2	CAN1H
3	CAN1L
4	GND

## CAN2 (CBCN2)

Pin	Assignment
1	+5V
2	CAN2H
3	CAN2L
4	GND

## I2C (TPJP1)

Pin	Function
1	+3.3V_TP
2	GND
3	TP_SCL
4	TP_ALT#
5	TP_SDA
6	TP_RST#

## AUDIO (AUJP1)

Pin	Function
1	MIC_IN
2	GND
3	GND
4	R-CH
5	GND
6	L-CH

## Front Panel (FPJP1)

Pin	Function
1	ONOFF_BTN#
2	FP_LED
3	GND
4	FP_PWM
5	RST#
6	RSV_BTN#

## SPI (SPJP1)

Pin	Function
1	SPI_CLK
2	+3.3V
3	SPI_MISO
4	SPI_SS0
5	SPI_MOSI
6	GND

**USB2\_3/4 (UBJ1)**

Pin	Assignment	Pin	Assignment
1	+5USBHDR	2	+5USBHDR
3	USBH_DN_HDR1	4	USBH_DN_HDR2
5	USBH_DP_HDR1	6	USBH_DP_HDR2
7	GND	8	GND
9	---	10	---

**JTAG (J1)**

Pin	Assignment	Pin	Assignment
1	MVDD_3V3	2	JTAG_TMS
3	GND	4	JTAG_TCK
5	GND	6	JTAG_TDO
7	GND	8	JTAG_TDI
9	GND	10	JTAG_RST#

**LCD Backlight (BLJ1)**

Pin	Function
1	VLED_12V / 5V
2	VLED_12V / 5V
3	VLED_12V / 5V
4	GND
5	GND
6	Backlight On / Off
7	GND
8	Backlight Dimming

**I2C/Touch (TPJ1)**

Pin	Function
1	NC
2	NC
3	TP_RST#
4	TP_ALT#
5	+VTP_3V3
6	TP_SCL
7	TP_SDA
8	GND

**FAN (SFJ1)**

Pin	Assignment
1	GND
2	PWM_FAN
3	TACH_FAN

### LCD LVDS (DPJ1)

Pin	Assignment	Pin	Assignment
1	GND	2	GND
3	LVDS_A2-	4	LVDS_B3+
5	LVDS_A2+	6	LVDS_B3-
7	GND	8	GND
9	LVDS_A3-	10	LVDS_B2+
11	LVDS_A3+	12	LVDS_B2-
13	GND	14	GND
15	LVDS_A0-	16	LVDS_B1+
17	LVDS_A0+	18	LVDS_B1-
19	GND	20	GND
21	LVDS_A1-	22	LVDS_B0+
23	LVDS_A1+	24	LVDS_B0-
25	GND	26	GND
27	LVDS_A_CLK-	28	LVDS_B_CLK-
29	LVDS_A_CLK+	30	LVDS_B_CLK+
31	GND	32	GND
33	GND	34	GND
35	+VDD_3.3V	36	+VDD_5V
37	+VDD_3.3V	38	+VDD_5V
39	+VDD_3.3V	40	+VDD_5V

### COM1/COM4 (TSJP1)

Pin	Function
1	SINN1
2	RTSN1
3	SOUTN1
4	CTSN1
5	GND
6	GND
7	DCDN4
8	SINN4
9	RTSN4
10	SOUTN4
11	CTSN4
12	DTRN4

### DIO (IOJP1)

Pin	Function
1	GND
2	PWM
3	GND
4	+5V_DIO
5	DIO0
6	DIO1
7	DIO2
8	DIO3
9	DIO4
10	DIO5
11	DIO6
12	DIO7



DFI reserves the right to change the specifications at any time prior to the product's release. This QR may be based on the product's revision. For more documentation and drivers, please visit the download page at [www.dfi.com/downloadcenter](http://www.dfi.com/downloadcenter), or via the QR codes to the right.

